



# 5° LEILÃO GENÉTICA AGROPECUÁRIA PORTO FRANCO

**21 JUN 10h**  
DOMINGO BRASÍLIA



*Leilão Presencial:* FAZENDA CABANHA RECREIO  
ARIQUEMES - RO



**100** REPRODUTORES  
NELORE P.O.

*Padrão e Mocho*

## CATÁLOGO



# 5º LEILÃO GENÉTICA AGROPECUÁRIA PORTO FRANCO



TRANSMISSÃO:

**AGRO+** **Claro-tv** | **vivo TV** | **SKY**  
 189/689 | 587 | 569  
 oi 569 | ASSOCIAÇÃO NEO

RETRANSMISSÃO:



REALIZAÇÃO



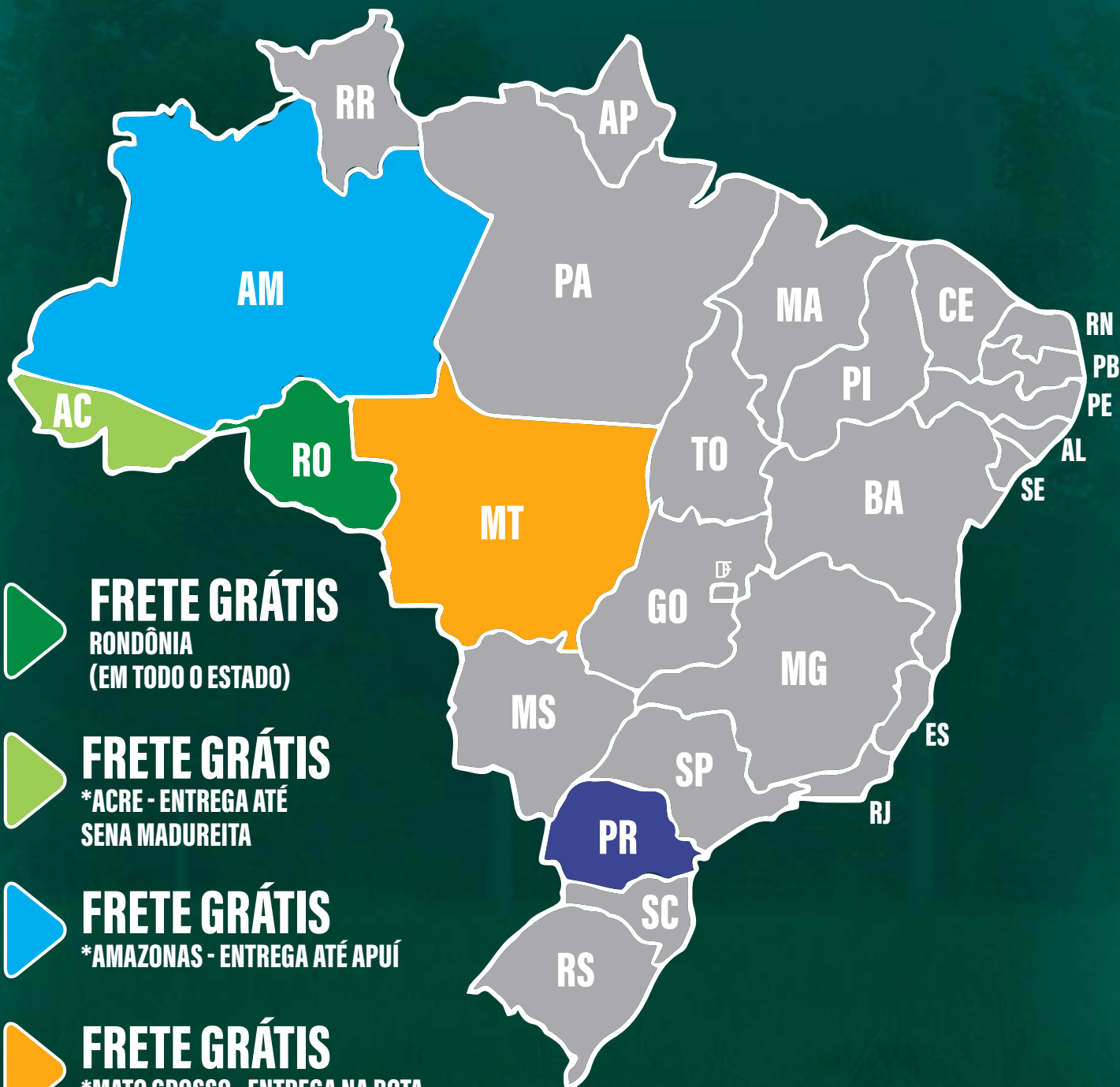
PATROCÍNIOS





5º LEILÃO GENÉTICA  
AGROPECUÁRIA  
**PORTO FRANCO**

# CONDIÇÕES DE FRETE



**FRETE GRÁTIS**  
RONDÔNIA  
(EM TODO O ESTADO)



**FRETE GRÁTIS**  
\*ACRE - ENTREGA ATÉ  
SENA MADUREITA



**FRETE GRÁTIS**  
\*AMAZONAS - ENTREGA ATÉ APUÍ



**FRETE GRÁTIS**  
\*MATO GROSSO - ENTREGA NA ROTA  
DE ARIQUEMES ATÉ CUIABÁ,  
COMODORO, PONTES E LACERDA,  
CACERES E CUIABÁ



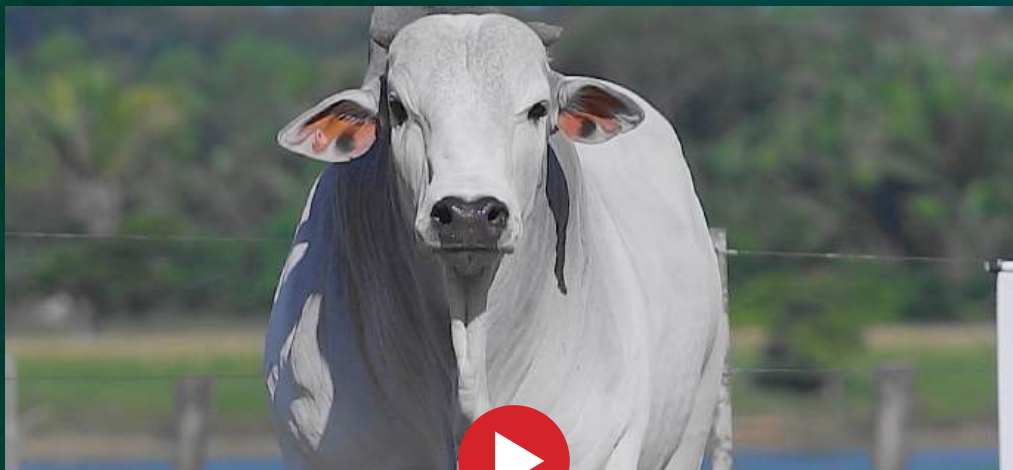
**FRETE GRÁTIS**  
\*PARANÁ (EM TODO ESTADO)  
1.500KM PARA CARGA FECHADA OU 100KM POR ANIMAL (CONSULTAR ROTAS)



# A5029 DA PT FRANCO

**RGD: MEC A5029 - Sexo: MACHO - Nasc.: 24/10/2023**

**Peso: 829 KG - CE: 43 cm**



REM GLADIADOR GENETICA ADITIVA

**REM JORDAO GENETICA ADITIVA**

REM REMP994HFIV

x

C2569 DA MN

**A876 DA PT FRANCO(\*)**

7242 DA PT FRANCO(\*)

	iABCZ	DECA	%
	19,64	1	3

PN-ED	PD-ED	PA-ED	PS-ED	PM120	IPP	STAY	PE365	AOL	ACAB
-0,35	7,71	14,96	18,23	4,93	-11,12	50,32	1,356	2,815	0,107
DECA	DECA	DECA	DECA	DECA	DECA	DECA	DECA	DECA	DECA
1	1	1	1	1	3	1	1	1	5

	IQGg	TOP
	26,3873	4

PD (KG)	PS	CFS	STAY	PES	IPP	AOL	EGS	MAR	CAR
8,55792	16,2144	8,24207	59,493506	1,94828	11,7436	2,23266	0,45428	0,45437	0,01794
TOP %	TOP %	TOP %	TOP %	TOP %	TOP %	TOP %	TOP %	TOP %	TOP %
10	8	2	12	1	97	12	24	31	57



# 695 FIV DA PT FRANCO

RGD: MECF 695 - Sexo: MACHO - Nasc.: 15/04/2024

Peso: **777 KG** - CE: **38 cm**



TOGO DA MN

BACKUP

**PACU DA MN**

x

**AMADORA DA PT FRANCO**

D8551 DA MN

SUSY DA PT FRANCO

	iABCZ	DECA	%
	22,26	1	2

PN-ED	PD-ED	PA-ED	PS-ED	PM120	IPP	STAY	PE365	AOL	ACAB
0,03	8,71	14,90	19,56	3,80	-9,73	56,68	1,024	2,384	2,998
DECA	DECA	DECA	DECA	DECA	DECA	DECA	DECA	DECA	DECA
4	1	1	1	1	3	1	1	1	1

	IQGg	TOP
	23,6367	6

PD (KG)	PS	CFS	STAY	PES	IPP	AOL	EGS	MAR	CAR
9,74019	17,4047	7,26534	57.539234	1,21720	0,0582	2,12415	1,11898	0,74718	0,15378
TOP %	TOP %	TOP %	TOP %	TOP %	TOP %	TOP %	TOP %	TOP %	TOP %
7	6	3	16	10	58	13	4	20	99



# 461 FIV DA PT FRANCO

RGD: MECF 461 - Sexo: MACHO - Nasc.: 12/04/2024

Peso: **773 KG** - CE: **41 cm**



REM TORIXOREU

C8288 DA MN

**REM ARMADOR**

x

**A205 DA PT FRANCO**

REM RONDA

4821 DA PT FRANCO

	iABCZ	DECA	%
	24,8	1	1

PN-ED	PD-ED	PA-ED	PS-ED	PM120	IPP	STAY	PE365	AOL	ACAB
0,94	7,97	13,06	14,72	3,58	-18,95	67,05	1,146	3,999	-0,168
DECA	DECA	DECA	DECA	DECA	DECA	DECA	DECA	DECA	DECA
10	1	1	1	1	1	1	1	1	6

	IQGg	TOP
	24,8736	5

PD (KG)	PS	CFS	STAY	PES	IPP	AOL	EGS	MAR	CAR
7,84072	16,0481	4,72333	68.209973	1,18583	-11,9824	3,43435	-0,64994	1,37651	0,10902
TOP %	TOP %	TOP %	TOP %	TOP %	TOP %	TOP %	TOP %	TOP %	TOP %
14	9	16	3	11	7	2	88	5	99



# A5825 DA PT FRANCO

RGD: MEC A5825 • Sexo: MACHO • Nasc.: 18/07/2024

Peso: **755 KG** • CE: **41 cm**



REM FUSCAO

C8288 DA MN

**PROMOTOR FIV DA S.NICE**

x

**7323 DA PT FRANCO**

B7367 FIV DA S.NICE

3410 DA PT FRANCO

	iABCZ	DECA	%
	7,38	4	-

PN-ED	PD-ED	PA-ED	PS-ED	PM120	IPP	STAY	PE365	AOL	ACAB
0,07	5,26	2,91	2,86	-1,85	-20,32	38,36	1,260	1,739	1,007
DECA	DECA	DECA	DECA	DECA	DECA	DECA	DECA	DECA	DECA
5	3	5	6	9	1	4	1	2	3

	IQGg	TOP
	10,1616	34

PD (KG)	PS	CFS	STAY	PES	IPP	AOL	EGS	MAR	CAR
2,93880	0,5932	5,76856	58.326876	1,84162	5,4618	1,36507	0,40953	1,39607	-0,04706
TOP %	TOP %	TOP %	TOP %	TOP %	TOP %	TOP %	TOP %	TOP %	TOP %
50	71	9	14	2	83	27	27	5	5



# A5788 DA PT FRANCO

RGD: MEC A5788 - Sexo: MACHO - Nasc.: 15/07/2024

Peso: **755 KG** - CE: **40 cm**



GENERAL DA MN

7308/04 PO PERDIZES

**D6595 DA MN**

x

**9561 DA PT FRANCO**

C.3666 DA MN

2868 DA PT FRANCO(\*)

	iABCZ	DECA	%
	10,23	3	-

PN-ED	PD-ED	PA-ED	PS-ED	PM120	IPP	STAY	PE365	AOL	ACAB
1,17	9,44	13,26	11,05	1,67	1,27	41,06	-0,011	1,050	0,499
DECA	DECA	DECA	DECA	DECA	DECA	DECA	DECA	DECA	DECA
10	1	1	2	3	7	3	7	4	4

	IQGg	TOP
	8,3818	40

PD (KG)	PS	CFS	STAY	PES	IPP	AOL	EGS	MAR	CAR
8,18710	11,8261	0,58711	50,178754	0,03039	13,0634	0,28311	-0,05982	-0,26336	0,08748
TOP %	TOP %	TOP %	TOP %	TOP %	TOP %	TOP %	TOP %	TOP %	TOP %
12	20	65	36	65	98	56	57	65	99



# 625 FIV DA PT FRANCO

RGD: MECF 625 • Sexo: MACHO • Nasc.: 04/07/2024

Peso: **737 KG** • CE: **41 cm**



REM ARMADOR

C8288 DA MN

**FORD FIV CAMPARINO**

x

**ATA DA PT FRANCO(\*)**

JHVM 11330 FIV CAMPARINO

MONOTONIA PT FRANCO(\*)

	iABCZ	DECA	%
	14,73	1	10

PN-ED	PD-ED	PA-ED	PS-ED	PM120	IPP	STAY	PE365	AOL	ACAB
-0,61	3,08	3,82	3,91	-0,02	-14,51	60,04	0,418	3,165	0,706
DECA	DECA	DECA	DECA	DECA	DECA	DECA	DECA	DECA	DECA
1	4	5	5	6	2	1	3	1	4

	IQGg	TOP
	15,4599	19

PD (KG)	PS	CFS	STAY	PES	IPP	AOL	EGS	MAR	CAR
3,23958	5,6388	4,60365	63.883911	0,13175	-0,6975	3,24649	0,07569	-0,42391	0,04066
TOP %	TOP %	TOP %	TOP %	TOP %	TOP %	TOP %	TOP %	TOP %	TOP %
47	47	17	6	59	54	3	48	72	80



# A6053 DA PT FRANCO

**RGD: MEC A6053 - Sexo: MACHO - Nasc.: 03/10/2024**

**Peso: 725 KG - CE: 44 cm**



TAJ FIV DE NAVIRAI  
**398 FIV DE NAVIRAI** x **A1217 DA PT FRANCO**  
281 FIV DE NAVIRAI  
7308/04 PO PERDIZES  
BASTA DA PT FRANCO(\*)

	iABCZ	DECA	%
	15,95	1	7

PN-ED	PD-ED	PA-ED	PS-ED	PM120	IPP	STAY	PE365	AOL	ACAB
0,69	6,65	5,69	5,14	1,48	-8,49	55,80	0,805	2,746	2,027
DECA	DECA	DECA	DECA	DECA	DECA	DECA	DECA	DECA	DECA
10	2	4	5	3	4	1	1	1	1

	IQGg	TOP
	16,239	17

PD (KG)	PS	CFS	STAY	PES	IPP	AOL	EGS	MAR	CAR
6,57636	10,6382	2,28793	58.335411	1,10659	8,1768	2,71387	0,76843	-0,51928	0,03874
TOP %	TOP %	TOP %	TOP %	TOP %	TOP %	TOP %	TOP %	TOP %	TOP %
21	24	42	14	13	91	6	11	76	78



# A5771 DA PT FRANCO

RGD: MEC A5771 - Sexo: MACHO - Nasc.: 13/07/2024

Peso: **711 KG** - CE: **39 cm**



QUARUP BONS

**ESCORIAL MAT.**

BARAVAH MAT.

x

BACKUP

**8171 DA PT FRANCO**

PATOA DA PT FRANCO(\*)

	iABCZ	DECA	%
	24,2	1	1

PN-ED	PD-ED	PA-ED	PS-ED	PM120	IPP	STAY	PE365	AOL	ACAB
0,99	17,42	25,99	30,71	0,11	-10,58	56,47	0,320	3,398	1,038
DECA	DECA	DECA	DECA	DECA	DECA	DECA	DECA	DECA	DECA
10	1	1	1	6	3	1	4	1	3

	IQGg	TOP
	23,6863	6

PD (KG)	PS	CFS	STAY	PES	IPP	AOL	EGS	MAR	CAR
14,75362	32,3559	6,56174	62,127787	-0,18186	-5,9917	2,77360	-0,13822	1,51649	0,12604
TOP %	TOP %	TOP %	TOP %	TOP %	TOP %	TOP %	TOP %	TOP %	TOP %
0,5	0,1	5	8	75	26	6	62	4	99



# A5806 DA PT FRANCO

RGD: MEC A5806 • Sexo: MACHO • Nasc.: 17/07/2024

Peso: **703 KG** • CE: **40 cm**



QUARUP BONS

C2569 DA MN

**ESCORIAL MAT.**

x

**A844 DA PT FRANCO**

BARAVAH MAT.

7240 DA PT FRANCO

	iABCZ	DECA	%
	14,18	2	11

PN-ED	PD-ED	PA-ED	PS-ED	PM120	IPP	STAY	PE365	AOL	ACAB
0,26	6,48	9,78	11,46	3,74	0,74	47,57	0,751	3,785	-0,769
DECA	DECA	DECA	DECA	DECA	DECA	DECA	DECA	DECA	DECA
7	2	2	2	1	7	1	1	1	8

	IQGg	TOP
	18,7819	12

PD (KG)	PS	CFS	STAY	PES	IPP	AOL	EGS	MAR	CAR
3,95392	12,8988	5,00595	52,583883	0,94110	2,6893	3,45512	-0,01428	0,57661	-0,01807
TOP %	TOP %	TOP %	TOP %	TOP %	TOP %	TOP %	TOP %	TOP %	TOP %
41	16	14	28	18	72	2	54	26	19



# A5915 DA PT FRANCO

RGD: MEC A5915 • Sexo: MACHO • Nasc.: 09/08/2024

Peso: **701 KG** • CE: **40 cm**



REM CALDONEGRO

URICO DA MAGGI(\*)

**CONCEITO FIV DA S.NICE**

x

**8309 DA PT FRANCO**

B5973 FIV DA S.NICE

4214 DA PT FRANCO

	iABCZ	DECA	%
	17,05	1	6

PN-ED	PD-ED	PA-ED	PS-ED	PM120	IPP	STAY	PE365	AOL	ACAB
-0,23	5,91	12,32	17,70	4,84	-1,81	51,07	0,317	3,109	0,194
DECA	DECA	DECA	DECA	DECA	DECA	DECA	DECA	DECA	DECA
2	2	1	1	1	6	1	4	1	5

	IQGg	TOP
	24,0349	5

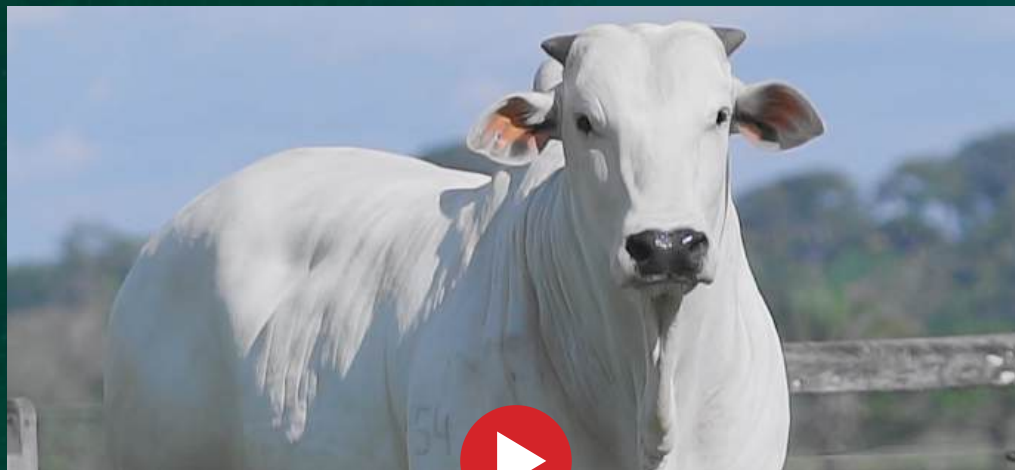
PD (KG)	PS	CFS	STAY	PES	IPP	AOL	EGS	MAR	CAR
5,28327	17,9408	3,34171	57.740941	0,72453	3,6891	3,27702	-0,51182	-0,63412	0,03100
TOP %	TOP %	TOP %	TOP %	TOP %	TOP %	TOP %	TOP %	TOP %	TOP %
30	6	29	16	28	76	3	83	80	71



# 768 DA PT FRANCO

RGD: MECF 768 - Sexo: MACHO - Nasc.: 02/10/2024

Peso: **701 KG** - CE: **42 cm**



QUARUP BONS

**ESCORIAL MAT.**

BARAVAH MAT.

x

GUETO DA PT FRANCO

**A1004 DA PT FRANCO**

2141 DA PT FRANCO

	iABCZ	DECA	%
	14,11	2	11

PN-ED	PD-ED	PA-ED	PS-ED	PM120	IPP	STAY	PE365	AOL	ACAB
1,17	10,03	15,29	20,96	2,89	15,38	42,16	0,939	3,299	0,446
DECA	DECA	DECA	DECA	DECA	DECA	DECA	DECA	DECA	DECA
10	1	1	1	1	10	3	1	1	4

	IQGg	TOP
	13,1382	25

PD (KG)	PS	CFS	STAY	PES	IPP	AOL	EGS	MAR	CAR
9,07962	18,4000	3,74113	42.428215	0,30158	3,5958	3,55764	-0,03469	0,98419	0,04676
TOP %	TOP %	TOP %	TOP %	TOP %	TOP %	TOP %	TOP %	TOP %	TOP %
9	5	25	62	50	76	2	55	13	85



# A5697 DA PT FRANCO

RGD: MEC A5697 - Sexo: MACHO - Nasc.: 27/06/2024

Peso: **695 KG** - CE: **40 cm**



QUARUP BONS

**ESCORIAL MAT.**

BARAVAH MAT.

x

NASIK FIV PERBONI

**8881 DA PT FRANCO**

4309 DA PT FRANCO

	iABCZ	DECA	%
	7,17	4	-

PN-ED	PD-ED	PA-ED	PS-ED	PM120	IPP	STAY	PE365	AOL	ACAB
0,99	8,87	10,16	11,66	-0,79	5,27	36,96	0,374	1,511	0,630
DECA	DECA	DECA	DECA	DECA	DECA	DECA	DECA	DECA	DECA
10	1	2	2	8	8	5	4	3	4

	IQGg	TOP
	2,8472	59

PD (KG)	PS	CFS	STAY	PES	IPP	AOL	EGS	MAR	CAR
8,29936	13,6293	3,21122	34.613853	0,34422	0,3153	1,91192	-0,23348	0,08316	-0,03374
TOP %	TOP %	TOP %	TOP %	TOP %	TOP %	TOP %	TOP %	TOP %	TOP %
12	14	31	84	48	60	16	68	48	9



# 618 FIV DA PT FRANCO

RGD: MECF 618 • Sexo: MACHO • Nasc.: 04/07/2024

Peso: **695 KG** • CE: **41 cm**



REM ARMADOR

BACKUP

**FORD FIV CAMPARINO**

x

**8335 DA PT FRANCO**

JHVM 11330 FIV CAMPARINO

1850 DA PT FRANCO

	iABCZ	DECA	%
	28,98	1	0,5

PN-ED	PD-ED	PA-ED	PS-ED	PM120	IPP	STAY	PE365	AOL	ACAB
0,67	14,48	22,82	27,42	3,02	-24,55	65,51	1,188	3,573	-0,750
DECA	DECA	DECA	DECA	DECA	DECA	DECA	DECA	DECA	DECA
10	1	1	1	1	1	1	1	1	8

	IQGg	TOP
	26,3511	4

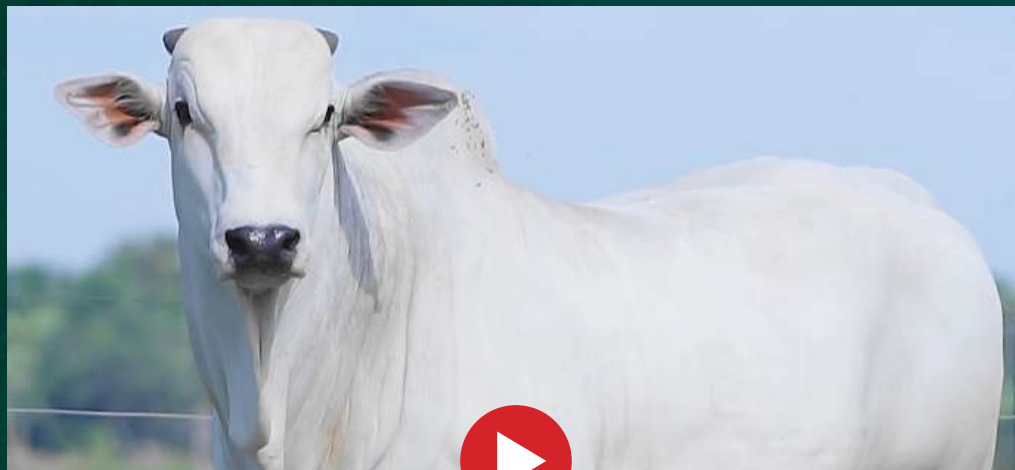
PD (KG)	PS	CFS	STAY	PES	IPP	AOL	EGS	MAR	CAR
13,91531	20,8844	9,49162	68.303599	1,05124	-21,7073	3,45990	-0,91067	-0,58539	0,14201
TOP %	TOP %	TOP %	TOP %	TOP %	TOP %	TOP %	TOP %	TOP %	TOP %
1	3	0,5	3	15	0,5	2	95	78	99



# 548 FIV DA PT FRANCO

RGD: MECF 548 - Sexo: MACHO - Nasc.: 20/06/2024

Peso: **685 KG** - CE: **43 cm**



REM TORIXOREU

C8288 DA MN

**REM ARMADOR**

x

**8686 DA PT FRANCO**

REM RONDA

AMADORA DA PT FRANCO

	iABCZ	DECA	%
	25,83	1	0,5

PN-ED	PD-ED	PA-ED	PS-ED	PM120	IPP	STAY	PE365	AOL	ACAB
-0,11	8,55	15,78	20,62	3,58	-16,15	61,80	1,593	3,903	2,514
DECA	DECA	DECA	DECA	DECA	DECA	DECA	DECA	DECA	DECA
3	1	1	1	1	2	1	1	1	1

	IQGg	TOP
	32,2963	1

PD (KG)	PS	CFS	STAY	PES	IPP	AOL	EGS	MAR	CAR
8,36279	19,1726	7,29575	68.785941	2,39689	-11,5994	3,16957	0,75666	0,77187	0,04575
TOP %	TOP %	TOP %	TOP %	TOP %	TOP %	TOP %	TOP %	TOP %	TOP %
11	4	3	3	0,5	8	3	12	19	84



# A6072 DA PT FRANCO

RGD: MEC A6072 - Sexo: MACHO - Nasc.: 06/10/2024

Peso: **683 KG** - CE: **39 cm**



TAJ FIV DE NAVIRAI

**398 FIV DE NAVIRAI**


281 FIV DE NAVIRAI

x


7308/04 PO PERDIZES

**9530 DA PT FRANCO(\*)**

4083 DA PT FRANCO(\*)

 iABCZ **16,66** DECA **1** % **6**

PN-ED	PD-ED	PA-ED	PS-ED	PM120	IPP	STAY	PE365	AOL	ACAB
0,79	14,15	17,45	20,33	2,35	-6,43	42,96	0,538	2,160	0,994
DECA	DECA	DECA	DECA	DECA	DECA	DECA	DECA	DECA	DECA
10	1	1	1	2	4	3	2	2	3

 IQGg **16,632** TOP **16**

PD (KG)	PS	CFS	STAY	PES	IPP	AOL	EGS	MAR	CAR
14,51397	22,6605	7,20423	47.226196	0,63842	13,6578	2,15007	0,31601	0,72302	0,07803
TOP %	TOP %	TOP %	TOP %	TOP %	TOP %	TOP %	TOP %	TOP %	TOP %
0,5	2	4	45	32	99	13	32	20	98



# 581 FIV DA PT FRANCO

RGD: MECF 581 • Sexo: MACHO • Nasc.: 25/06/2024

Peso: **683 KG** • CE: **43 cm**



REM TORIXOREU

C8288 DA MN

**REM ARMADOR**

x

**8686 DA PT FRANCO**

REM RONDA

AMADORA DA PT FRANCO

	iABCZ	DECA	%
	28,28	1	0,5

PN-ED	PD-ED	PA-ED	PS-ED	PM120	IPP	STAY	PE365	AOL	ACAB
0,23	9,92	11,17	16,93	0,84	-29,51	73,88	0,785	5,364	1,941
DECA	DECA	DECA	DECA	DECA	DECA	DECA	DECA	DECA	DECA
7	1	2	1	4	1	1	1	1	1

	IQGg	TOP
	30,1325	2

PD (KG)	PS	CFS	STAY	PES	IPP	AOL	EGS	MAR	CAR
10,18044	14,2504	4,78838	80,719573	1,67337	-20,0992	4,83757	1,02261	0,06856	-0,06208
TOP %	TOP %	TOP %	TOP %	TOP %	TOP %	TOP %	TOP %	TOP %	TOP %
5	13	15	0,5	3	0,5	0,5	5	49	2



# 746 DA PT FRANCO

RGD: MECF 746 - Sexo: MACHO - Nasc.: 30/10/2024

Peso: **655 KG** - CE: **40 cm**



QUARUP BONS

**ESCORIAL MAT.**

BARAVAH MAT.

x

BACKUP

**7266 DA PT FRANCO**

PANTUFA DA PT FRANCO(\*)

	iABCZ	DECA	%
	30,2	1	0,1

PN-ED	PD-ED	PA-ED	PS-ED	PM120	IPP	STAY	PE365	AOL	ACAB
0,49	10,77	21,48	25,78	4,75	-23,65	66,17	1,064	5,146	1,168
DECA	DECA	DECA	DECA	DECA	DECA	DECA	DECA	DECA	DECA
9	1	1	1	1	1	1	1	1	2

	IQGg	TOP
	34,1741	1

PD (KG)	PS	CFS	STAY	PES	IPP	AOL	EGS	MAR	CAR
11,49373	27,0041	6,84142	62,937407	1,23261	-21,3513	5,26659	0,28128	1,57247	-0,00659
TOP %	TOP %	TOP %	TOP %	TOP %	TOP %	TOP %	TOP %	TOP %	TOP %
3	0,5	5	7	10	0,5	0,1	34	3	29



# 705 DA PT FRANCO

RGD: MECF 705 • Sexo: MACHO • Nasc.: 16/10/2024

Peso: **653 KG** • CE: **38 cm**



QUARUP BONS

**ESCORIAL MAT.**

BARAVAH MAT.

x

URICO DA MAGGI(\*)

**A1637 DA PT FRANCO**

8435 DA PT FRANCO(\*)

	iABCZ	DECA	%
	17,7	1	5

PN-ED	PD-ED	PA-ED	PS-ED	PM120	IPP	STAY	PE365	AOL	ACAB
0,49	11,43	19,28	21,02	-0,04	-26,99	45,40	0,418	3,000	1,070
DECA	DECA	DECA	DECA	DECA	DECA	DECA	DECA	DECA	DECA
9	1	1	1	6	1	2	3	1	3

	IQGg	TOP
	18,8001	12

PD (KG)	PS	CFS	STAY	PES	IPP	AOL	EGS	MAR	CAR
11,36926	21,2736	4,76795	53.724323	-0,03763	-20,1515	3,02993	1,04114	1,14525	0,11921
TOP %	TOP %	TOP %	TOP %	TOP %	TOP %	TOP %	TOP %	TOP %	TOP %
3	2	15	25	68	0,5	4	5	9	99



# A6034 DA PT FRANCO

RGD: MEC A6034 - Sexo: MACHO - Nasc.: 30/09/2024

Peso: **647 KG** - CE: **37 cm**



REM ARMADOR

C8288 DA MN


**FORD FIV CAMPARINO**

x


**A205 DA PT FRANCO**

JHVM 11330 FIV CAMPARINO

4821 DA PT FRANCO

 iABCZ **19,92** DECA **1** % **3**

PN-ED	PD-ED	PA-ED	PS-ED	PM120	IPP	STAY	PE365	AOL	ACAB
0,55	5,32	7,53	7,90	0,19	-26,66	66,92	0,646	3,752	-0,728
DECA	DECA	DECA	DECA	DECA	DECA	DECA	DECA	DECA	DECA
9	3	3	4	6	1	1	2	1	8

 IQGg **19,8751** TOP **10**

PD (KG)	PS	CFS	STAY	PES	IPP	AOL	EGS	MAR	CAR
4,45350	8,5667	5,24703	70.631014	0,49870	-12,6127	3,85734	-0,24499	0,09661	0,08477
TOP %	TOP %	TOP %	TOP %	TOP %	TOP %	TOP %	TOP %	TOP %	TOP %
37	33	12	2	39	6	1	69	47	99



# A5669 DA PT FRANCO

RGD: MEC A5669 - Sexo: MACHO - Nasc.: 24/06/2024

Peso: **645 KG** - CE: **39 cm**



QUARUP BONS

**ESCORIAL MAT.**

BARAVAH MAT.

x

FRYDO FIV

**7729 DA PT FRANCO(\*)**

4537 DA PT FRANCO(\*)

	iABCZ	DECA	%
	14,53	1	10

PN-ED	PD-ED	PA-ED	PS-ED	PM120	IPP	STAY	PE365	AOL	ACAB
0,32	5,83	9,55	12,02	4,18	-3,02	45,53	0,770	3,530	0,671
DECA	DECA	DECA	DECA	DECA	DECA	DECA	DECA	DECA	DECA
8	2	2	2	1	6	2	1	1	4

	IQGg	TOP
	11,0162	31

PD (KG)	PS	CFS	STAY	PES	IPP	AOL	EGS	MAR	CAR
6,03676	9,6188	6,19636	44.862038	0,23946	-0,3288	2,38463	-0,40302	0,75329	0,07997
TOP %	TOP %	TOP %	TOP %	TOP %	TOP %	TOP %	TOP %	TOP %	TOP %
24	28	7	54	53	56	10	77	19	98



# A5950 DA PT FRANCO

RGD: MEC A5950 - Sexo: MACHO - Nasc.: 21/09/2024

Peso: **635 KG** - CE: **41 cm**



REM ARMADOR

GUETO DA PT FRANCO

**COMBOIO FIV DA S.NICE**

x

**9355 DA PT FRANCO**

B4987 FIV DA S.NICE

3555 DA PT FRANCO

	iABCZ	DECA	%
	6,91	4	-

PN-ED	PD-ED	PA-ED	PS-ED	PM120	IPP	STAY	PE365	AOL	ACAB
0,08	4,72	4,74	6,35	-1,95	-4,09	40,58	0,865	3,426	-0,299
DECA	DECA	DECA	DECA	DECA	DECA	DECA	DECA	DECA	DECA
5	3	4	4	10	5	3	1	1	7

	IQGg	TOP
	5,0225	52

PD (KG)	PS	CFS	STAY	PES	IPP	AOL	EGS	MAR	CAR
5,28397	5,6255	1,77620	45.381009	1,00894	6,1106	3,40947	-0,12561	0,51796	0,06168
TOP %	TOP %	TOP %	TOP %	TOP %	TOP %	TOP %	TOP %	TOP %	TOP %
30	47	49	52	16	86	3	61	28	93



# A6091 DA PT FRANCO

RGD: MEC A6091 - Sexo: MACHO - Nasc.: 08/10/2024

Peso: **635 KG** - CE: **39 cm**



RAI DA MN  
**MAXIMO DO MORRO** x **8371 DA PT FRANCO**  
18 LAJA C8288 DA MN  
2822 DA PT FRANCO

	iABCZ	DECA	%
	24,61	1	1

PN-ED	PD-ED	PA-ED	PS-ED	PM120	IPP	STAY	PE365	AOL	ACAB
-0,23	8,78	12,31	17,68	3,76	-17,03	67,16	0,777	0,491	2,537
DECA	DECA	DECA	DECA	DECA	DECA	DECA	DECA	DECA	DECA
2	1	1	1	1	2	1	1	5	1

	IQGg	TOP
	29,3235	2

PD (KG)	PS	CFS	STAY	PES	IPP	AOL	EGS	MAR	CAR
8,13296	15,2082	8,43554	79.233797	1,07639	-3,4755	-0,32448	0,86173	-0,46107	-0,00549
TOP %	TOP %	TOP %	TOP %	TOP %	TOP %	TOP %	TOP %	TOP %	TOP %
12	10	2	0,5	14	39	72	9	73	30



# A5778 DA PT FRANCO

RGD: MEC A5778 - Sexo: MACHO - Nasc.: 14/07/2024

Peso: **623 KG** - CE: **38 cm**



RAI DA MN

URICO DA MAGGI(\*)

**MAXIMO DO MORRO**

x

**A1595 DA PT FRANCO**

18 LAJA

8605 DA PT FRANCO

	iABCZ	DECA	%
	7,37	4	-

PN-ED	PD-ED	PA-ED	PS-ED	PM120	IPP	STAY	PE365	AOL	ACAB
0,00	2,34	3,76	7,27	-1,13	-9,77	44,95	0,209	0,487	1,119
DECA	DECA	DECA	DECA	DECA	DECA	DECA	DECA	DECA	DECA
4	5	5	4	8	3	2	5	5	3



IQGg  
13,5691

TOP  
24

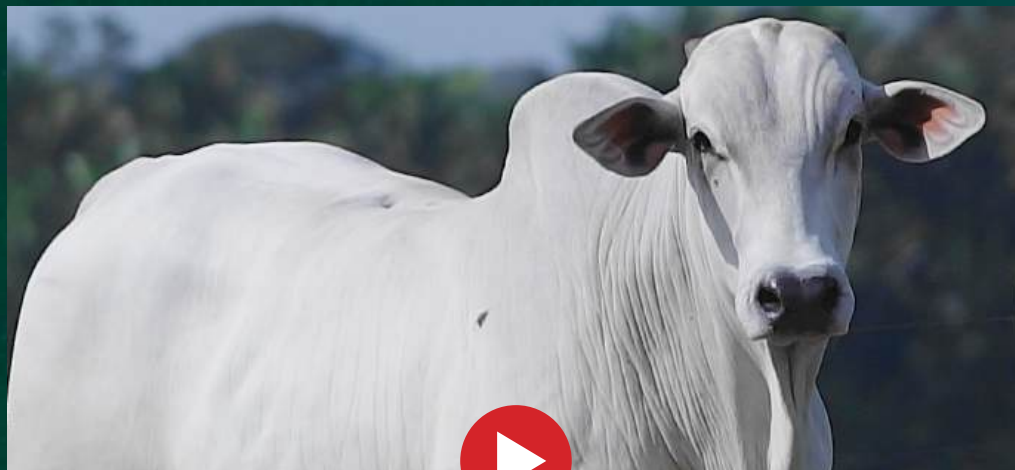
PD (KG)	PS	CFS	STAY	PES	IPP	AOL	EGS	MAR	CAR
2,73461	8,2011	5,02571	61.775605	0,32809	-1,7643	0,68597	0,62889	0,92398	-0,00129
TOP %	TOP %	TOP %	TOP %	TOP %	TOP %	TOP %	TOP %	TOP %	TOP %
52	34	13	9	48	48	45	16	14	35



# A5964 DA PT FRANCO

RGD: MEC A5964 • Sexo: MACHO • Nasc.: 23/09/2024

Peso: **659 KG** • CE: **38 cm**



QUARUP BONS

**ESCORIAL MAT.**

BARAVAH MAT.

x

MARISCO

**A1652 DA PT FRANCO**

ALUCINAR DA PT FRANCO

	iABCZ	DECA	%
	14,63	1	10

PN-ED	PD-ED	PA-ED	PS-ED	PM120	IPP	STAY	PE365	AOL	ACAB
1,30	10,67	16,38	23,32	-0,50	-6,83	46,02	-0,250	3,208	0,497
DECA	DECA	DECA	DECA	DECA	DECA	DECA	DECA	DECA	DECA
10	1	1	1	7	4	2	8	1	4

	IQGg	TOP
	12,7047	26

PD (KG)	PS	CFS	STAY	PES	IPP	AOL	EGS	MAR	CAR
11,82854	23,9560	3,12646	48.989299	-0,67860	3,5896	3,04122	0,20585	1,99991	0,01885
TOP %	TOP %	TOP %	TOP %	TOP %	TOP %	TOP %	TOP %	TOP %	TOP %
3	1	32	39	92	76	4	39	1	58



# A5494 DA PT FRANCO

RGD: MEC A5494 - Sexo: MACHO - Nasc.: 18/05/2024

Peso: **629 KG** - CE: **41 cm**



REM ARMADOR

C8288 DA MN

**CHELUR MAT.**

x

**A557 DA PT FRANCO**

TANGA MAT.

AFAMADA 5292 DA PT FRANCO

	iABCZ	DECA	%
	12,51	2	14

PN-ED	PD-ED	PA-ED	PS-ED	PM120	IPP	STAY	PE365	AOL	ACAB
0,08	2,61	4,09	7,57	-0,34	-11,62	56,50	0,058	0,225	2,380
DECA	DECA	DECA	DECA	DECA	DECA	DECA	DECA	DECA	DECA
5	5	5	4	7	3	1	6	6	1

	IQGg	TOP
	14,2339	22

PD (KG)	PS	CFS	STAY	PES	IPP	AOL	EGS	MAR	CAR
2,84650	6,7926	3,28562	70.171862	0,19288	-4,7897	-0,01543	0,54012	0,10491	0,03049
TOP %	TOP %	TOP %	TOP %	TOP %	TOP %	TOP %	TOP %	TOP %	TOP %
51	41	30	2	56	32	64	20	47	71



# A6051 DA PT FRANCO

RGD: MEC A6051 - Sexo: MACHO - Nasc.: 03/10/2024

Peso: **625 KG** - CE: **38 cm**



QUARUP BONS

**ESCORIAL MAT.**

BARAVAH MAT.

x

URICO DA MAGGI(\*)

**A971 DA PT FRANCO**

3642 DA PT FRANCO(\*)

	iABCZ	DECA	%
	12,08	2	15

PN-ED	PD-ED	PA-ED	PS-ED	PM120	IPP	STAY	PE365	AOL	ACAB
0,69	10,02	14,99	19,72	2,01	-1,38	36,15	0,557	3,429	-0,228
DECA	DECA	DECA	DECA	DECA	DECA	DECA	DECA	DECA	DECA
10	1	1	1	2	6	5	2	1	6

	IQGg	TOP
	12,1963	28

PD (KG)	PS	CFS	STAY	PES	IPP	AOL	EGS	MAR	CAR
9,97748	20,1001	7,24136	41.049672	0,20382	10,4905	3,34651	-0,06482	2,13584	0,04860
TOP %	TOP %	TOP %	TOP %	TOP %	TOP %	TOP %	TOP %	TOP %	TOP %
6	3	4	66	55	96	3	57	0,5	86



# 693 FIV DA PT FRANCO

RGD: MECF 693 - Sexo: MACHO - Nasc.: 15/04/2024

Peso: **759 KG** - CE: **41 cm**



TOGO DA MN

URICO DA MAGGI(\*)

**PACU DA MN**

x

**A192 DA PT FRANCO**

D8551 DA MN

7412 DA PT FRANCO

	iABCZ	DECA	%
	23,6	1	1

PN-ED	PD-ED	PA-ED	PS-ED	PM120	IPP	STAY	PE365	AOL	ACAB
0,58	12,53	19,51	26,00	5,90	-12,98	50,42	1,147	3,948	-0,423
DECA	DECA	DECA	DECA	DECA	DECA	DECA	DECA	DECA	DECA
10	1	1	1	1	2	1	1	1	7

	IQGg	TOP
	30,3339	2

PD (KG)	PS	CFS	STAY	PES	IPP	AOL	EGS	MAR	CAR
11,88817	22,2856	7,67630	59,922311	1,38432	-2,3975	3,93626	0,52033	0,79928	0,06817
TOP %	TOP %	TOP %	TOP %	TOP %	TOP %	TOP %	TOP %	TOP %	TOP %
3	2	3	12	7	45	1	21	18	95



# A6094 DA PT FRANCO

RGD: MEC A6094 - Sexo: MACHO - Nasc.: 08/10/2024

Peso: 743 KG - CE: 41 cm



D4685 DA MN

C8288 DA MN


**ZERO UM FIV DA JACAMIM**

x


**9116 DA PT FRANCO**

ITALIA FIV DA JACAMIM

FRUTA DA PT FRANCO

 iABCZ 18,19 DECA 1 % 5

PN-ED	PD-ED	PA-ED	PS-ED	PM120	IPP	STAY	PE365	AOL	ACAB
0,26	10,86	15,80	20,32	1,46	-8,04	53,32	1,106	0,811	-0,211
DECA	DECA	DECA	DECA	DECA	DECA	DECA	DECA	DECA	DECA
7	1	1	1	3	4	1	1	4	6

 IQGg 17,9654 TOP 14

PD (KG)	PS	CFS	STAY	PES	IPP	AOL	EGS	MAR	CAR
11,02733	18,7872	5,14401	57,059722	1,29360	-0,1357	0,57871	-0,08560	0,32165	0,05853
TOP %	TOP %	TOP %	TOP %	TOP %	TOP %	TOP %	TOP %	TOP %	TOP %
4	5	13	17	8	57	48	59	37	92



# A5751 DA PT FRANCO

RGD: MEC A5751 • Sexo: MACHO • Nasc.: 09/07/2024

Peso: **727 KG** • CE: **43 cm**



QUARUP BONS

**ESCORIAL MAT.**


BARAVAH MAT.

x

LACRAN FIV EAO

**A1513 DA PT FRANCO**

7934 DA PT FRANCO

 iABCZ **15,42** DECA **1** % **8**

PN-ED	PD-ED	PA-ED	PS-ED	PM120	IPP	STAY	PE365	AOL	ACAB
0,77	11,56	19,35	22,37	2,25	-15,67	35,43	0,828	3,030	1,148
DECA	DECA	DECA	DECA	DECA	DECA	DECA	DECA	DECA	DECA
10	1	1	1	2	2	5	1	1	2

 IQGg **20,2677** TOP **10**

PD (KG)	PS	CFS	STAY	PES	IPP	AOL	EGS	MAR	CAR
11,42207	24,7652	8,57627	47.021673	1,01552	-2,6610	2,96824	-0,22855	-0,61169	0,08701
TOP %	TOP %	TOP %	TOP %	TOP %	TOP %	TOP %	TOP %	TOP %	TOP %
3	1	2	46	16	43	5	68	79	99



# 622 FIV DA PT FRANCO

RGD: MECF 622 - Sexo: MACHO - Nasc.: 04/07/2024

Peso: 715 KG - CE: 40 cm



REM ARMADOR

VENCIUS RG(\*)

**FORD FIV CAMPARINO**

x

**8651 DA PT FRANCO(\*)**

JHVM 11330 FIV CAMPARINO

5268 DA PT FRANCO(\*)

	iABCZ	DECA	%
	14,47	1	10

PN-ED	PD-ED	PA-ED	PS-ED	PM120	IPP	STAY	PE365	AOL	ACAB
-0,04	5,98	8,66	10,15	0,24	-22,88	49,32	0,724	2,571	0,909
DECA	DECA	DECA	DECA	DECA	DECA	DECA	DECA	DECA	DECA
4	2	2	3	6	1	1	2	1	3

	IQGg	TOP
	19,3215	11

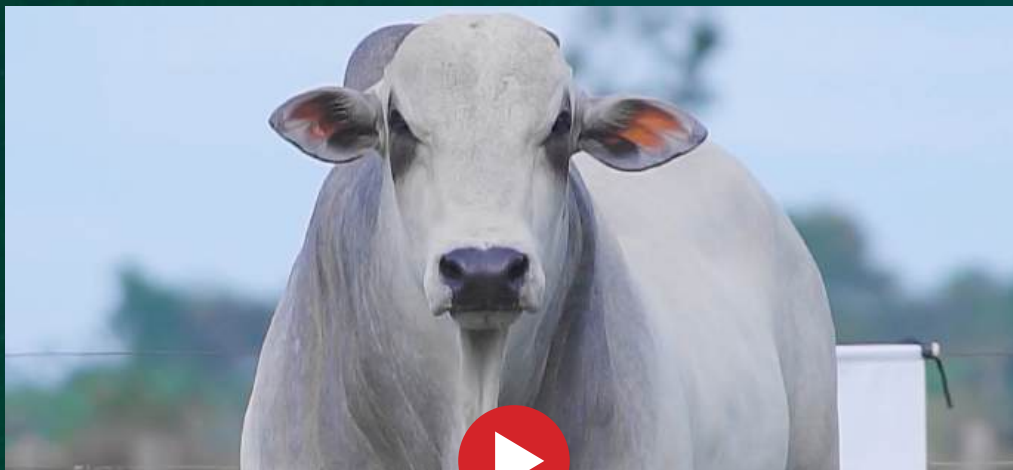
PD (KG)	PS	CFS	STAY	PES	IPP	AOL	EGS	MAR	CAR
5,78771	9,6664	6,01772	62.692184	0,43122	-13,9426	2,20318	0,76029	0,90226	0,04374
TOP %	TOP %	TOP %	TOP %	TOP %	TOP %	TOP %	TOP %	TOP %	TOP %
26	28	8	8	43	4	12	12	15	83



# 434 FIV DA PT FRANCO

RGD: MECF 434 - Sexo: MACHO - Nasc.: 12/04/2024

Peso: **715 KG** - CE: **38 cm**



TOGO DA MN

BACKUP

**PACU DA MN**

x

**AMADORA DA PT FRANCO**

D8551 DA MN

SUSY DA PT FRANCO

	iABCZ	DECA	%
	20,5	1	3

PN-ED	PD-ED	PA-ED	PS-ED	PM120	IPP	STAY	PE365	AOL	ACAB
-0,12	4,40	8,18	12,76	3,20	-21,35	61,80	0,646	1,508	2,321
DECA	DECA	DECA	DECA	DECA	DECA	DECA	DECA	DECA	DECA
3	3	3	2	1	1	1	2	3	1

	IQGg	TOP
	27,0016	3

PD (KG)	PS	CFS	STAY	PES	IPP	AOL	EGS	MAR	CAR
6,58671	12,7243	6,14220	70.580279	0,97133	-13,7017	1,16766	1,37678	-0,17093	0,14530
TOP %	TOP %	TOP %	TOP %	TOP %	TOP %	TOP %	TOP %	TOP %	TOP %
21	17	7	2	17	5	32	2	60	99



# 621 FIV DA PT FRANCO

RGD: MECF 621 • Sexo: MACHO • Nasc.: 04/07/2024

Peso: 710 KG • CE: 43 cm



REM TORIXOREU

C8288 DA MN

**REM ARMADOR**

x

**6530 DA PT FRANCO**

REM RONDA

DEMAGOGIA

	iABCZ	DECA	%
	22,28	1	2

PN-ED	PD-ED	PA-ED	PS-ED	PM120	IPP	STAY	PE365	AOL	ACAB
-0,19	7,21	14,34	18,56	1,27	-27,75	61,41	1,360	1,007	1,298
DECA	DECA	DECA	DECA	DECA	DECA	DECA	DECA	DECA	DECA
2	2	1	1	3	1	1	1	4	2

	IQGg	TOP
	26,2317	4

PD (KG)	PS	CFS	STAY	PES	IPP	AOL	EGS	MAR	CAR
7,05632	17,1737	5,11128	69.29972	1,63980	-15,1792	0,92053	0,75119	-0,13725	0,13395
TOP %	TOP %	TOP %	TOP %	TOP %	TOP %	TOP %	TOP %	TOP %	TOP %
18	7	13	3	3	3	39	12	59	99



# A5731 DA PT FRANCO

RGD: MEC A5731 • Sexo: MACHO • Nasc.: 02/07/2024

Peso: 709 KG • CE: 38 cm



QUARUP BONS

**ESCORIAL MAT.**

BARAVAH MAT.

x

VENCIUS RG(\*)

**6919 DA PT FRANCO**

4012 DA PT FRANCO(\*)

	iABCZ	DECA	%
	8,28	3	-

PN-ED	PD-ED	PA-ED	PS-ED	PM120	IPP	STAY	PE365	AOL	ACAB
0,70	5,72	9,94	11,65	3,72	3,30	36,02	-0,622	2,636	0,615
DECA	DECA	DECA	DECA	DECA	DECA	DECA	DECA	DECA	DECA
10	2	2	2	1	8	5	10	1	4



IQGg  
10,1615

TOP  
34

PD (KG)	PS	CFS	STAY	PES	IPP	AOL	EGS	MAR	CAR
5,13894	14,6298	2,51740	39,053663	-0,89782	2,0489	2,25614	-0,08287	-0,90454	0,02028
TOP %	TOP %	TOP %	TOP %	TOP %	TOP %	TOP %	TOP %	TOP %	TOP %
31	12	39	72	96	69	11	58	88	60



# A5711 DA PT FRANCO

RGD: MEC A5711 - Sexo: MACHO - Nasc.: 28/06/2024

Peso: 707 KG - CE: 40 cm



QUARUP BONS

**ESCORIAL MAT.**

BARAVAH MAT.

x

FRYDO FIV

**A958 DA PT FRANCO(\*)**

7498 DA PT FRANCO(\*)

	iABCZ	DECA	%
	16,42	1	7

PN-ED	PD-ED	PA-ED	PS-ED	PM120	IPP	STAY	PE365	AOL	ACAB
0,65	11,34	20,88	22,93	1,09	-9,44	41,89	0,718	3,328	0,814
DECA	DECA	DECA	DECA	DECA	DECA	DECA	DECA	DECA	DECA
10	1	1	1	4	3	3	2	1	3

	IQGg	TOP
	18,2343	13

PD (KG)	PS	CFS	STAY	PES	IPP	AOL	EGS	MAR	CAR
11,22012	24,8142	7,80471	41.862945	0,03953	2,8665	3,45937	0,82603	-0,04092	-0,03680
TOP %	TOP %	TOP %	TOP %	TOP %	TOP %	TOP %	TOP %	TOP %	TOP %
3	1	2	64	64	73	2	10	54	8



# 586 FIV DA PT FRANCO

RGD: MECF 586 - Sexo: MACHO - Nasc.: 27/06/2024

Peso: **707 KG** - CE: **41 cm**



REM ARMADOR

C8288 DA MN

**FORD FIV CAMPARINO**

x

**ATA DA PT FRANCO(\*)**

JHVM 11330 FIV CAMPARINO

MONOTONIA PT FRANCO(\*)

	iABCZ 17,11	DECA 1	% 6
--	----------------	-----------	--------

PN-ED	PD-ED	PA-ED	PS-ED	PM120	IPP	STAY	PE365	AOL	ACAB
-0,41	2,90	5,10	8,53	3,47	-25,22	56,04	0,631	1,664	1,196
DECA	DECA	DECA	DECA	DECA	DECA	DECA	DECA	DECA	DECA
1	5	4	3	1	1	1	2	2	2

	IQGg 21,3131	TOP 8
--	-----------------	----------

PD (KG)	PS	CFS	STAY	PES	IPP	AOL	EGS	MAR	CAR
3,68991	9,0578	5,09639	66.733875	0,29029	-6,1091	1,40797	-0,13850	0,25661	0,04248
TOP %	TOP %	TOP %	TOP %	TOP %	TOP %	TOP %	TOP %	TOP %	TOP %
43	31	13	4	51	26	26	62	40	82



# 517 DA PT FRANCO

RGD: MECF 517 • Sexo: MACHO • Nasc.: 02/04/2024

Peso: 705 KG • CE: 42 cm



GENERAL DA MN

LUCARO FIV EAO

**D6595 DA MN**

x

**A2877 DA PT FRANCO**

C.3666 DA MN

8591 DA PT FRANCO

	iABCZ	DECA	%
	22,2	1	2

PN-ED	PD-ED	PA-ED	PS-ED	PM120	IPP	STAY	PE365	AOL	ACAB
0,69	11,36	17,74	19,65	4,53	-27,74	49,19	0,448	4,813	0,587
DECA	DECA	DECA	DECA	DECA	DECA	DECA	DECA	DECA	DECA
10	1	1	1	1	1	1	3	1	4



IQGg  
21,1991

TOP  
8

PD (KG)	PS	CFS	STAY	PES	IPP	AOL	EGS	MAR	CAR
9,83576	13,2290	4,07515	60,598983	1,09019	-10,9491	3,99373	-0,30892	0,13230	0,04824
TOP %	TOP %	TOP %	TOP %	TOP %	TOP %	TOP %	TOP %	TOP %	TOP %
6	15	21	10	13	9	1	72	46	86



# A5867 DA PT FRANCO

RGD: MEC A5867 - Sexo: MACHO - Nasc.: 23/07/2024

Peso: 701 KG - CE: 39 cm



QUARUP BONS

**ESCORIAL MAT.**

BARAVAH MAT.

x

BACKUP

**8636 DA PT FRANCO**

3459 DA PT FRANCO

	iABCZ	DECA	%
	26,06	1	0,5

PN-ED	PD-ED	PA-ED	PS-ED	PM120	IPP	STAY	PE365	AOL	ACAB
-0,17	9,31	19,30	21,79	4,66	-24,87	54,38	1,234	5,300	3,144
DECA	DECA	DECA	DECA	DECA	DECA	DECA	DECA	DECA	DECA
2	1	1	1	1	1	1	1	1	1

	IQGg	TOP
	30,0433	2

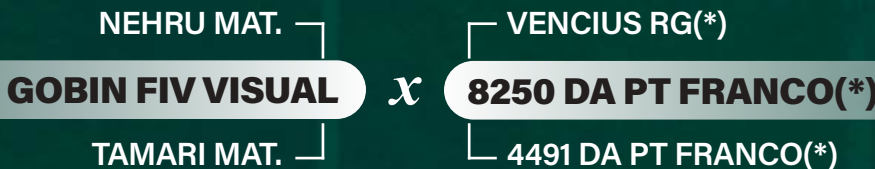
PD (KG)	PS	CFS	STAY	PES	IPP	AOL	EGS	MAR	CAR
7,75600	19,4759	7,41815	57.243206	1,08156	-13,8474	4,64211	0,73434	1,23735	0,02976
TOP %	TOP %	TOP %	TOP %	TOP %	TOP %	TOP %	TOP %	TOP %	TOP %
14	4	3	17	14	5	0,5	12	7	70



# A5766 DA PT FRANCO(\*)

RGD: MEC A5766 • Sexo: MACHO • Nasc.: 11/07/2024

Peso: **697 KG** • CE: **41 cm**



iABCZ DECA %  
 18,18 1 5

PN-ED	PD-ED	PA-ED	PS-ED	PM120	IPP	STAY	PE365	AOL	ACAB
0,79	12,60	16,11	18,48	1,68	-14,56	49,64	0,759	1,835	0,253
DECA	DECA	DECA	DECA	DECA	DECA	DECA	DECA	DECA	DECA
10	1	1	1	3	2	1	1	2	5

IQGg TOP  
 14,9198 20

PD (KG)	PS	CFS	STAY	PES	IPP	AOL	EGS	MAR	CAR
13,35228	16,6502	4,94686	58.776717	0,42373	-1,5637	1,85405	-0,47606	1,81720	0,05437
TOP %	TOP %	TOP %	TOP %	TOP %	TOP %	TOP %	TOP %	TOP %	TOP %
1	8	14	14	43	49	17	81	2	90



# A5504 DA PT FRANCO

RGD: MEC A5504 - Sexo: MACHO - Nasc.: 19/05/2024

Peso: **693 KG** - CE: **40 cm**



NEHRU MAT.

**CLARIM MAT.**

VIMARA MAT.

x

PAJERO DO PINGADO(\*)

**4517 DA PT FRANCO**

FOLHA DA PT FRANCO(\*)

	iABCZ	DECA	%
	5,73	4	-

PN-ED	PD-ED	PA-ED	PS-ED	PM120	IPP	STAY	PE365	AOL	ACAB
-0,11	4,67	7,94	7,19	0,83	11,29	39,14	-0,005	2,896	-0,887
DECA	DECA	DECA	DECA	DECA	DECA	DECA	DECA	DECA	DECA
3	3	3	4	4	10	4	7	1	8

	IQGg	TOP
	7,5989	42

PD (KG)	PS	CFS	STAY	PES	IPP	AOL	EGS	MAR	CAR
5,79062	10,4821	2,36545	40,998504	-0,16935	13,3853	2,72573	0,02001	-0,07209	-0,07659
TOP %	TOP %	TOP %	TOP %	TOP %	TOP %	TOP %	TOP %	TOP %	TOP %
26	25	41	66	75	99	6	52	56	0,5



# A6097 DA PT FRANCO

RGD: MEC A6097 - Sexo: MACHO - Nasc.: 09/10/2024

Peso: **679 KG** - CE: **38 cm**



REM ARMADOR

7308/04 PO PERDIZES


**FORD FIV CAMPARINO**

x


**9592 DA PT FRANCO**

JHVM 11330 FIV CAMPARINO

ALCIONE DA PT FRANCO

 iABCZ 25,14 DECA 1 % 1

PN-ED	PD-ED	PA-ED	PS-ED	PM120	IPP	STAY	PE365	AOL	ACAB
0,63	11,95	21,66	22,81	3,30	-23,58	57,53	1,244	3,904	-0,313
DECA	DECA	DECA	DECA	DECA	DECA	DECA	DECA	DECA	DECA
10	1	1	1	1	1	1	1	1	7

 IQGg 27,8857 TOP 3

PD (KG)	PS	CFS	STAY	PES	IPP	AOL	EGS	MAR	CAR
11,08101	21,9970	9,68134	63.945697	1,44137	-12,9306	3,92123	-0,45731	-0,58697	0,09956
TOP %	TOP %	TOP %	TOP %	TOP %	TOP %	TOP %	TOP %	TOP %	TOP %
4	2	0,5	6	6	6	1	80	78	99



# 564 FIV DA PT FRANCO

RGD: MECF 564 - Sexo: MACHO - Nasc.: 20/06/2024

Peso: **679 KG** - CE: **40 cm**



REM ARMADOR

C8288 DA MN

**FORD FIV CAMPARINO**

x

**ATA DA PT FRANCO(\*)**

JHVM 11330 FIV CAMPARINO

MONOTONIA PT FRANCO(\*)

	iABCZ	DECA	%
	26,69	1	0,5

PN-ED	PD-ED	PA-ED	PS-ED	PM120	IPP	STAY	PE365	AOL	ACAB
-0,40	8,50	13,39	20,67	1,09	-23,29	71,99	0,799	3,308	1,879
DECA	DECA	DECA	DECA	DECA	DECA	DECA	DECA	DECA	DECA
1	1	1	1	4	1	1	1	1	1

	IQGg	TOP
	28,2064	3

PD (KG)	PS	CFS	STAY	PES	IPP	AOL	EGS	MAR	CAR
8,89441	18,8671	8,99576	71.701487	0,15887	-8,1428	3,21891	0,86385	1,54973	0,05876
TOP %	TOP %	TOP %	TOP %	TOP %	TOP %	TOP %	TOP %	TOP %	TOP %
9	4	1	2	58	18	3	9	4	92



# 759 DA PT FRANCO

RGD: MECF 759 - Sexo: MACHO - Nasc.: 30/10/2024

Peso: **673 KG** - CE: **40 cm**



QUARUP BONS

**ESCORIAL MAT.**

BARAVAH MAT.

x

URICO DA MAGGI(\*)

**A359 DA PT FRANCO(\*)**

AMELIE DA PT FRANCO



iABCZ  
16,7

DECA  
1

%  
6

PN-ED	PD-ED	PA-ED	PS-ED	PM120	IPP	STAY	PE365	AOL	ACAB
0,16	5,68	15,03	19,53	3,34	-1,69	46,72	0,422	4,745	1,750
DECA	DECA	DECA	DECA	DECA	DECA	DECA	DECA	DECA	DECA
6	2	1	1	1	6	2	3	1	1



IQGg  
26,3613

TOP  
4

PD (KG)	PS	CFS	STAY	PES	IPP	AOL	EGS	MAR	CAR
6,83909	21,7900	5,70167	57.263964	0,20381	-3,1028	4,98410	0,44638	0,43256	0,05813
TOP %	TOP %	TOP %	TOP %	TOP %	TOP %	TOP %	TOP %	TOP %	TOP %
19	2	9	16	55	41	0,1	25	32	91



# A5500 DA PT FRANCO

RGD: MEC A5500 - Sexo: MACHO - Nasc.: 19/05/2024

Peso: **671 KG** - CE: **40 cm**



CARAJA DA MN

CATALAO MAT.

**E3950 DA MN**

x

**A2839 DA PT FRANCO**

D7554 DA MN

A11 DA PT FRANCO

	iABCZ	DECA	%
	14,55	1	10

PN-ED	PD-ED	PA-ED	PS-ED	PM120	IPP	STAY	PE365	AOL	ACAB
0,65	8,86	15,08	17,50	-1,73	-19,32	50,75	0,661	1,197	-0,946
DECA	DECA	DECA	DECA	DECA	DECA	DECA	DECA	DECA	DECA
10	1	1	1	9	1	1	2	3	8

	IQGg	TOP
	12,006	28

PD (KG)	PS	CFS	STAY	PES	IPP	AOL	EGS	MAR	CAR
9,67850	15,7209	5,99774	61.109893	0,60228	-7,6235	0,66733	-0,71297	-1,49973	0,00613
TOP %	TOP %	TOP %	TOP %	TOP %	TOP %	TOP %	TOP %	TOP %	TOP %
7	9	8	10	34	19	46	90	97	43



# A5732 DA PT FRANCO

RGD: MEC A5732 - Sexo: MACHO - Nasc.: 03/07/2024

Peso: **669 KG** - CE: **38 cm**



GENERAL DA MN

C8288 DA MN


**D6595 DA MN**

x


**6971 DA PT FRANCO**

C.3666 DA MN

3044 DA PT FRANCO(\*)

 iABCZ **13,75** DECA **2** % **11**

PN-ED	PD-ED	PA-ED	PS-ED	PM120	IPP	STAY	PE365	AOL	ACAB
-0,09	6,11	7,26	11,81	-0,96	-0,17	61,29	-0,083	0,918	-0,149
DECA	DECA	DECA	DECA	DECA	DECA	DECA	DECA	DECA	DECA
3	2	3	2	8	7	1	7	4	6

 **IQGg** **12,5815** **TOP** **27**

PD (KG)	PS	CFS	STAY	PES	IPP	AOL	EGS	MAR	CAR
5,84599	9,8367	3,48585	68.015237	-0,06670	5,0556	1,01246	-0,23308	0,97872	-0,06169
TOP %	TOP %	TOP %	TOP %	TOP %	TOP %	TOP %	TOP %	TOP %	TOP %
26	27	28	3	70	82	36	68	13	2



# A5844 DA PT FRANCO

RGD: MEC A5844 • Sexo: MACHO • Nasc.: 21/07/2024

Peso: **665 KG** • CE: **42 cm**



REM TORIXOREU

D6595 DA MN


**REM ARMADOR**

x

**A2624 DA PT FRANCO**

REM RONDA

9887 DA PT FRANCO

 iABCZ **16,88** DECA **1** % **6**

PN-ED	PD-ED	PA-ED	PS-ED	PM120	IPP	STAY	PE365	AOL	ACAB
0,26	2,08	6,32	4,70	4,51	-13,17	60,55	0,718	1,673	-0,490
DECA	DECA	DECA	DECA	DECA	DECA	DECA	DECA	DECA	DECA
7	5	4	5	1	2	1	2	2	7

 **IQGg** **18,5084** **TOP** **13**

PD (KG)	PS	CFS	STAY	PES	IPP	AOL	EGS	MAR	CAR
1,53245	1,4293	2,97751	69.116486	1,13766	-9,8500	1,18849	-0,48681	-0,39965	0,02535
TOP %	TOP %	TOP %	TOP %	TOP %	TOP %	TOP %	TOP %	TOP %	TOP %
62	67	33	3	12	12	32	82	71	65



# 500 FIV DA PT FRANCO

RGD: MECF 500 - Sexo: MACHO - Nasc.: 24/04/2024

Peso: **665 KG** - CE: **40 cm**



TOGO DA MN

7308/04 PO PERDIZES

**PACU DA MN**

x

**9573 DA PT FRANCO**

D8551 DA MN

A4166 DA PT FRANCO

	iABCZ	DECA	%
	22,29	1	2

PN-ED	PD-ED	PA-ED	PS-ED	PM120	IPP	STAY	PE365	AOL	ACAB
-0,68	4,52	9,24	10,12	5,65	-23,93	59,42	0,929	1,802	3,656
DECA	DECA	DECA	DECA	DECA	DECA	DECA	DECA	DECA	DECA
1	3	2	3	1	1	1	1	2	1

	IQGg	TOP
	25,2119	4

PD (KG)	PS	CFS	STAY	PES	IPP	AOL	EGS	MAR	CAR
4,80012	7,3225	4,59019	66.993865	0,59341	-2,4485	1,57004	1,42302	2,49983	0,03505
TOP %	TOP %	TOP %	TOP %	TOP %	TOP %	TOP %	TOP %	TOP %	TOP %
34	39	17	4	34	44	23	1	0,5	75



# A5927 DA PT FRANCO

RGD: MEC A5927 - Sexo: MACHO - Nasc.: 20/08/2024

Peso: **657 KG** - CE: **42 cm**



REM CALDONEGRO

C8288 DA MN

**CONCEITO FIV DA S.NICE**

x

**8936 DA PT FRANCO**

B5973 FIV DA S.NICE

EMILI DA PT FRANCO(\*)

	iABCZ	DECA	%
	16,82	1	6

PN-ED	PD-ED	PA-ED	PS-ED	PM120	IPP	STAY	PE365	AOL	ACAB
0,26	5,58	11,64	15,62	0,27	-13,46	58,50	0,650	-0,239	1,542
DECA	DECA	DECA	DECA	DECA	DECA	DECA	DECA	DECA	DECA
7	2	1	1	6	2	1	2	7	2

	IQGg	TOP
	15,0443	20

PD (KG)	PS	CFS	STAY	PES	IPP	AOL	EGS	MAR	CAR
4,10020	14,1202	4,51649	56.362067	0,51071	-2,7937	-0,27123	0,32093	0,36872	0,02851
TOP %	TOP %	TOP %	TOP %	TOP %	TOP %	TOP %	TOP %	TOP %	TOP %
40	13	17	18	38	42	71	32	35	69



# 708 DA PT FRANCO

RGD: MECF 708 • Sexo: MACHO • Nasc.: 16/10/2024

Peso: **657 KG** • CE: **40 cm**



iABCZ DECA %  
 15,11 1 9

PN-ED	PD-ED	PA-ED	PS-ED	PM120	IPP	STAY	PE365	AOL	ACAB
0,94	9,50	11,87	16,55	-0,38	-18,39	47,11	1,338	0,068	1,495
DECA	DECA	DECA	DECA	DECA	DECA	DECA	DECA	DECA	DECA
10	1	1	1	7	1	2	1	6	2

IQGg TOP  
 9,1587 37

PD (KG)	PS	CFS	STAY	PES	IPP	AOL	EGS	MAR	CAR
10,55533	17,6149	6,27984	47.564764	1,21809	-6,2873	-1,57811	0,07218	0,32894	0,04342
TOP %	TOP %	TOP %	TOP %	TOP %	TOP %	TOP %	TOP %	TOP %	TOP %
5	6	7	44	10	25	93	48	36	82



# 735 DA PT FRANCO

RGD: MECF 735 • Sexo: MACHO • Nasc.: 29/10/2024

Peso: **657 KG** • CE: **38 cm**



QUARUP BONS

**ESCORIAL MAT.**

BARAVAH MAT.

x

8434 DA EAO

**A2237 DA PT FRANCO**

3615 DA PT FRANCO

	iABCZ	DECA	%
	13,29	2	12

PN-ED	PD-ED	PA-ED	PS-ED	PM120	IPP	STAY	PE365	AOL	ACAB
1,01	9,36	15,49	20,62	1,22	-9,76	39,33	0,356	3,422	-0,092
DECA	DECA	DECA	DECA	DECA	DECA	DECA	DECA	DECA	DECA
10	1	1	1	3	3	4	4	1	6

	IQGg	TOP
	16,7814	16

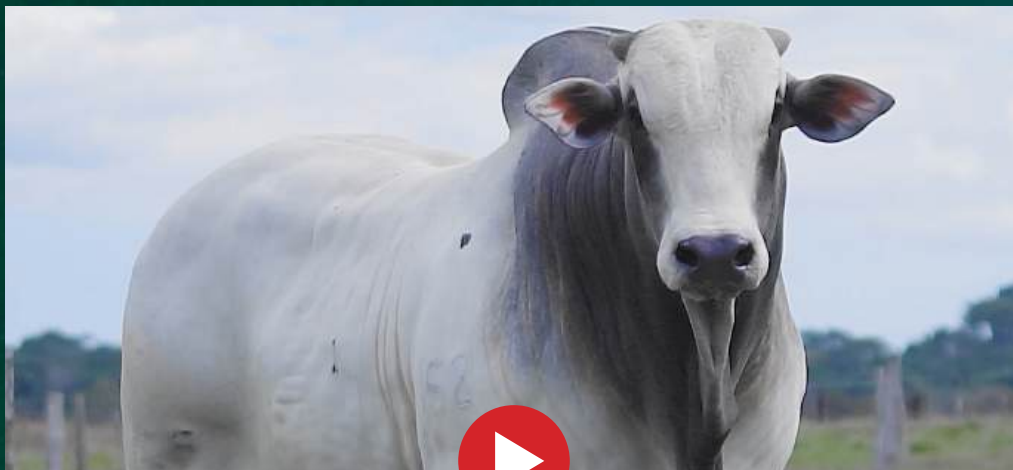
PD (KG)	PS	CFS	STAY	PES	IPP	AOL	EGS	MAR	CAR
8,50212	20,0445	5,74958	46.399151	0,60763	-10,3402	3,91598	0,09071	-0,10083	-0,01715
TOP %	TOP %	TOP %	TOP %	TOP %	TOP %	TOP %	TOP %	TOP %	TOP %
11	3	9	48	33	11	1	47	57	20



# 596 FIV DA PT FRANCO

RGD: MECF 596 - Sexo: MACHO - Nasc.: 27/06/2024

Peso: **655 KG** - CE: **40 cm**



REM TORIXOREU

BACKUP

**REM ARMADOR**

x

**BAKULA FIV DA PT FRANCO**

REM RONDA

FLORAL DA PT FRANCO

	iABCZ	DECA	%
	21,52	1	2

PN-ED	PD-ED	PA-ED	PS-ED	PM120	IPP	STAY	PE365	AOL	ACAB
0,35	5,63	8,63	10,15	1,83	-20,69	64,76	1,124	6,006	-1,311
DECA	DECA	DECA	DECA	DECA	DECA	DECA	DECA	DECA	DECA
8	2	2	3	2	1	1	1	1	9

	IQGg	TOP
	25,6801	4

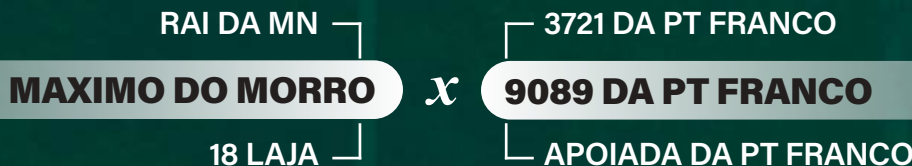
PD (KG)	PS	CFS	STAY	PES	IPP	AOL	EGS	MAR	CAR
5,06935	7,2421	3,54183	70.302899	2,03400	-19,4595	5,50820	-0,25429	1,11889	0,02462
TOP %	TOP %	TOP %	TOP %	TOP %	TOP %	TOP %	TOP %	TOP %	TOP %
31	39	27	2	1	1	0,1	69	10	64




# A6040 DA PT FRANCO


RGD: MEC A6040 • Sexo: MACHO • Nasc.: 01/10/2024

Peso: **639 KG** • CE: **38 cm**



 iABCZ DECA %  
 19,28 1 4

PN-ED	PD-ED	PA-ED	PS-ED	PM120	IPP	STAY	PE365	AOL	ACAB
0,19	8,55	13,41	17,07	1,27	-8,96	52,84	1,132	3,272	3,207
DECA	DECA	DECA	DECA	DECA	DECA	DECA	DECA	DECA	DECA
6	1	1	1	3	3	1	1	1	1

 IQGg TOP  
 23,1062 6

PD (KG)	PS	CFS	STAY	PES	IPP	AOL	EGS	MAR	CAR
8,84616	14,9873	7,53619	55.931458	1,65906	-10,5767	3,13316	1,68200	1,06625	0,03641
TOP %	TOP %	TOP %	TOP %	TOP %	TOP %	TOP %	TOP %	TOP %	TOP %
9	11	3	19	3	10	4	0,5	11	76



# A5848 DA PT FRANCO

RGD: MEC A5848 - Sexo: MACHO - Nasc.: 22/07/2024

Peso: **639 KG** - CE: **38 cm**



RAI DA MN

URICO DA MAGGI(\*)

**MAXIMO DO MORRO**

x

**A1670 DA PT FRANCO**

18 LAJA

8462 DA PT FRANCO

	iABCZ	DECA	%
	16,24	1	7

PN-ED	PD-ED	PA-ED	PS-ED	PM120	IPP	STAY	PE365	AOL	ACAB
-0,34	7,40	12,66	19,88	2,75	-11,05	46,24	0,741	1,995	1,385
DECA	DECA	DECA	DECA	DECA	DECA	DECA	DECA	DECA	DECA
1	2	1	1	1	3	2	1	2	2

	IQGg	TOP
	22,9468	6

PD (KG)	PS	CFS	STAY	PES	IPP	AOL	EGS	MAR	CAR
6,53347	16,9285	4,95168	61.349276	1,05092	-8,9725	1,34174	0,98824	0,33266	0,00152
TOP %	TOP %	TOP %	TOP %	TOP %	TOP %	TOP %	TOP %	TOP %	TOP %
21	7	14	9	15	15	28	6	36	38



# 450 FIV DA PT FRANCO

RGD: MECF 450 - Sexo: MACHO - Nasc.: 12/04/2024

Peso: **637 KG** - CE: **40 cm**



TOGO DA MN

BACKUP


**PACU DA MN**

x


**8444 DA PT FRANCO**

D8551 DA MN

ADA DA PT FRANCO(\*)

 iABCZ 27,63 DECA 1 % 0,5

PN-ED	PD-ED	PA-ED	PS-ED	PM120	IPP	STAY	PE365	AOL	ACAB
-0,61	6,49	11,77	15,31	5,84	-22,64	68,84	0,551	2,891	4,378
DECA	DECA	DECA	DECA	DECA	DECA	DECA	DECA	DECA	DECA
1	2	1	1	1	1	1	2	1	1

 IQGg 27,7919 TOP 3

PD (KG)	PS	CFS	STAY	PES	IPP	AOL	EGS	MAR	CAR
5,93163	9,8309	3,92018	65.582623	0,86427	-5,0313	2,36552	1,92736	0,45248	0,11045
TOP %	TOP %	TOP %	TOP %	TOP %	TOP %	TOP %	TOP %	TOP %	TOP %
25	27	23	5	21	31	10	0,1	31	99



# 567 FIV DA PT FRANCO

RGD: MECF 567 - Sexo: MACHO - Nasc.: 22/06/2024

Peso: **635 KG** - CE: **40 cm**



REM ARMADOR

BACKUP


**FORD FIV CAMPARINO**

x


**8335 DA PT FRANCO**

JHVM 11330 FIV CAMPARINO

1850 DA PT FRANCO

 iABCZ **19,99** DECA **1** % **3**

PN-ED	PD-ED	PA-ED	PS-ED	PM120	IPP	STAY	PE365	AOL	ACAB
0,98	9,83	10,45	10,72	-1,09	-17,32	69,15	0,416	1,211	-0,087
DECA	DECA	DECA	DECA	DECA	DECA	DECA	DECA	DECA	DECA
10	1	2	2	8	2	1	3	3	6

 IQGg **10,0777** TOP **34**

PD (KG)	PS	CFS	STAY	PES	IPP	AOL	EGS	MAR	CAR
10,22111	7,5098	4,80018	64.385454	0,83008	-10,0849	1,26957	-0,48672	0,10085	-0,00584
TOP %	TOP %	TOP %	TOP %	TOP %	TOP %	TOP %	TOP %	TOP %	TOP %
5	38	15	6	23	12	30	82	47	30



# A5800 DA PT FRANCO

RGD: MEC A5800 • Sexo: MACHO • Nasc.: 17/07/2024

Peso: **625 KG** • CE: **41 cm**



RAI DA MN

C8288 DA MN


**MAXIMO DO MORRO**

x


**A2557 DA PT FRANCO**

18 LAJA

7934 DA PT FRANCO

 iABCZ **15,84** DECA **1** % **8**

PN-ED	PD-ED	PA-ED	PS-ED	PM120	IPP	STAY	PE365	AOL	ACAB
-0,15	6,67	9,30	12,64	2,25	-23,20	48,04	0,762	0,256	2,792
DECA	DECA	DECA	DECA	DECA	DECA	DECA	DECA	DECA	DECA
3	2	2	2	2	1	1	1	6	1

 IQGg **18,7098** TOP **12**

PD (KG)	PS	CFS	STAY	PES	IPP	AOL	EGS	MAR	CAR
6,31991	8,1759	3,39275	69.097317	1,02326	-4,6760	-0,09820	1,15126	1,80076	0,04916
TOP %	TOP %	TOP %	TOP %	TOP %	TOP %	TOP %	TOP %	TOP %	TOP %
22	35	29	3	16	32	67	4	2	86



# 666 DA PT FRANCO

RGD: MECF 666 - Sexo: MACHO - Nasc.: 05/09/2024

Peso: **625 KG** - CE: **40 cm**



REM ARMADOR

SAMURAI MAT.


**COMBOIO FIV DA S.NICE**

x


**A2062 DA PT FRANCO(\*)**

B4987 FIV DA S.NICE

8844 DA PT FRANCO(\*)

 iABCZ DECA %  
17,11 1 6

PN-ED	PD-ED	PA-ED	PS-ED	PM120	IPP	STAY	PE365	AOL	ACAB
0,54	13,62	17,24	20,51	-1,42	-16,10	45,20	0,958	4,183	0,799
DECA	DECA	DECA	DECA	DECA	DECA	DECA	DECA	DECA	DECA
9	1	1	1	9	2	2	1	1	3

 IQGg TOP  
17,0707 15

PD (KG)	PS	CFS	STAY	PES	IPP	AOL	EGS	MAR	CAR
12,50487	19,5378	7,95903	54.771225	1,22877	-8,2089	2,96570	0,03659	0,65705	0,00101
TOP %	TOP %	TOP %	TOP %	TOP %	TOP %	TOP %	TOP %	TOP %	TOP %
2	4	2	22	10	17	5	50	23	37



# 577 FIV DA PT FRANCO

RGD: MECF 577 - Sexo: MACHO - Nasc.: 22/06/2024

Peso: **621 KG** - CE: **39 cm**



REM ARMADOR

BACKUP

**FORD FIV CAMPARINO**

x

**8335 DA PT FRANCO**

JHVM 11330 FIV CAMPARINO

1850 DA PT FRANCO

	iABCZ	DECA	%
	18,59	1	4

PN-ED	PD-ED	PA-ED	PS-ED	PM120	IPP	STAY	PE365	AOL	ACAB
0,49	9,85	11,94	13,38	-0,26	-15,03	60,67	0,981	3,226	-2,061
DECA	DECA	DECA	DECA	DECA	DECA	DECA	DECA	DECA	DECA
9	1	1	2	7	2	1	1	1	10

	IQGg	TOP
	9,1697	37

PD (KG)	PS	CFS	STAY	PES	IPP	AOL	EGS	MAR	CAR
8,80292	9,2437	5,34831	54.692945	0,71976	-5,7842	2,62104	-1,23682	-0,99012	-0,04168
TOP %	TOP %	TOP %	TOP %	TOP %	TOP %	TOP %	TOP %	TOP %	TOP %
10	30	11	22	28	27	7	99	90	6



# 448 FIV DA PT FRANCO

RGD: MECF 448 • Sexo: MACHO • Nasc.: 12/04/2024

**Peso: 755 KG • CE: 38 cm**



REM TORIXOREU

C8288 DA MN


**REM ARMADOR**

x


**9435 DA PT FRANCO**

REM RONDA

GRACA DA PT FRANCO

 iABCZ **19,82** DECA **1** % **3**

PN-ED	PD-ED	PA-ED	PS-ED	PM120	IPP	STAY	PE365	AOL	ACAB
-0,37	4,21	6,03	4,90	0,55	-22,67	68,83	0,584	0,705	3,102
DECA	DECA	DECA	DECA	DECA	DECA	DECA	DECA	DECA	DECA
1	3	4	5	5	1	1	2	5	1

 IQGg **23,0006** TOP **6**

PD (KG)	PS	CFS	STAY	PES	IPP	AOL	EGS	MAR	CAR
3,74186	8,0849	5,25965	73.870821	0,86085	-18,8843	1,04023	1,19443	1,91915	0,13612
TOP %	TOP %	TOP %	TOP %	TOP %	TOP %	TOP %	TOP %	TOP %	TOP %
43	35	12	1	22	1	36	3	2	99



# A5533 DA PT FRANCO

RGD: MEC A5533 - Sexo: MACHO - Nasc.: 01/06/2024

Peso: **695 KG** - CE: **40 cm**



QUARUP BONS

**ESCORIAL MAT.**

BARAVAH MAT.

x

PAJERO DO PINGADO(\*)

**8189 DA PT FRANCO(\*)**

FAVA DA PT FRANCO(\*)

	iABCZ	DECA	%
	13,69	2	12

PN-ED	PD-ED	PA-ED	PS-ED	PM120	IPP	STAY	PE365	AOL	ACAB
0,54	5,16	9,45	11,46	2,68	-9,28	48,09	0,327	2,326	0,631
DECA	DECA	DECA	DECA	DECA	DECA	DECA	DECA	DECA	DECA
9	3	2	2	1	3	1	4	1	4

	IQGg	TOP
	17,8828	14

PD (KG)	PS	CFS	STAY	PES	IPP	AOL	EGS	MAR	CAR
8,13402	17,7270	5,21952	52,927776	-0,05126	-0,1496	3,04650	0,73537	0,78115	0,01753
TOP %	TOP %	TOP %	TOP %	TOP %	TOP %	TOP %	TOP %	TOP %	TOP %
12	6	12	27	69	57	4	12	18	56



# A6089 DA PT FRANCO

RGD: MEC A6089 - Sexo: MACHO - Nasc.: 07/10/2024

Peso: **615 KG** - CE: **40 cm**



REM ARMADOR

C8288 DA MN


**COMBOIO FIV DA S.NICE**

x


**6943 DA PT FRANCO**

B4987 FIV DA S.NICE

2165 DA PT FRANCO

 iABCZ **16,37** DECA **1** % **7**

PN-ED	PD-ED	PA-ED	PS-ED	PM120	IPP	STAY	PE365	AOL	ACAB
0,12	9,28	13,37	18,98	-0,38	-9,60	54,96	0,192	3,783	-1,753
DECA	DECA	DECA	DECA	DECA	DECA	DECA	DECA	DECA	DECA
5	1	1	1	7	3	1	5	1	10

 IQGg **19,3462** TOP **11**

PD (KG)	PS	CFS	STAY	PES	IPP	AOL	EGS	MAR	CAR
7,67892	15,4312	3,84692	65.635516	0,64884	-3,6101	4,07955	-0,65889	0,78539	-0,01924
TOP %	TOP %	TOP %	TOP %	TOP %	TOP %	TOP %	TOP %	TOP %	TOP %
14	10	24	5	31	38	1	88	18	18



# 483 FIV DA PT FRANCO

RGD: MECF 483 - Sexo: MACHO - Nasc.: 15/04/2024

Peso: **615 KG** - CE: **38 cm**



TOGO DA MN

BACKUP


**PACU DA MN**

x


**4628 DA PT FRANCO**

D8551 DA MN

CULTURA DA PT

 iABCZ **24,73** DECA **1** % **1**

PN-ED	PD-ED	PA-ED	PS-ED	PM120	IPP	STAY	PE365	AOL	ACAB
-0,46	4,41	7,53	9,29	5,36	-17,71	71,67	0,493	1,492	3,529
DECA	DECA	DECA	DECA	DECA	DECA	DECA	DECA	DECA	DECA
1	3	3	3	1	1	1	3	3	1

 IQGg **27,1291** TOP **3**

PD (KG)	PS	CFS	STAY	PES	IPP	AOL	EGS	MAR	CAR
3,15160	6,3909	5,16284	73.700528	0,51956	-3,6375	1,50337	1,30857	0,46281	0,03539
TOP %	TOP %	TOP %	TOP %	TOP %	TOP %	TOP %	TOP %	TOP %	TOP %
48	43	12	1	38	38	24	2	30	75



# A5614 DA PT FRANCO

RGD: MEC A5614 - Sexo: MACHO - Nasc.: 17/06/2024

Peso: **737 KG** - CE: **44 cm**



QUARUP BONS

URICO DA MAGGI(\*)

**ESCORIAL MAT.**

x

**A317 DA PT FRANCO**

BARAVAH MAT.

CHAYENNE4881 DA PT FRANCO

	iABCZ	DECA	%
	15,7	1	8

PN-ED	PD-ED	PA-ED	PS-ED	PM120	IPP	STAY	PE365	AOL	ACAB
0,81	11,78	19,29	23,22	2,43	-7,70	36,32	1,019	4,017	0,569
DECA	DECA	DECA	DECA	DECA	DECA	DECA	DECA	DECA	DECA
10	1	1	1	2	4	5	1	1	4

	IQGg	TOP
	15,3145	19

PD (KG)	PS	CFS	STAY	PES	IPP	AOL	EGS	MAR	CAR
13,44482	23,4017	8,23732	38.119055	0,78017	6,3223	3,56424	0,31455	1,77151	0,00683
TOP %	TOP %	TOP %	TOP %	TOP %	TOP %	TOP %	TOP %	TOP %	TOP %
1	2	2	75	25	86	2	32	2	44



# 480 FIV DA PT FRANCO

RGD: MECF 480 - Sexo: MACHO - Nasc.: 15/04/2024

Peso: **781 KG** - CE: **43 cm**



REM TORIXOREU

C8288 DA MN

**REM ARMADOR**

x

**9435 DA PT FRANCO**

REM RONDA

GRACA DA PT FRANCO

	iABCZ	DECA	%
	21,14	1	2

PN-ED	PD-ED	PA-ED	PS-ED	PM120	IPP	STAY	PE365	AOL	ACAB
0,01	4,42	9,95	10,84	3,71	-29,91	61,93	0,708	0,252	2,457
DECA	DECA	DECA	DECA	DECA	DECA	DECA	DECA	DECA	DECA
4	3	2	2	1	1	1	2	6	1

	IQGg	TOP
	26,7692	3

PD (KG)	PS	CFS	STAY	PES	IPP	AOL	EGS	MAR	CAR
3,77232	13,6551	4,56542	66,77276	0,91221	-26,1415	0,58808	0,72666	1,31643	0,11200
TOP %	TOP %	TOP %	TOP %	TOP %	TOP %	TOP %	TOP %	TOP %	TOP %
42	14	17	4	20	0,1	48	13	6	99



# 444 FIV DA PT FRANCO

RGD: MECF 444 - Sexo: MACHO - Nasc.: 12/04/2024

Peso: 773 KG - CE: 40 cm



REM TORIXOREU

C8288 DA MN

**REM ARMADOR**

x

**9435 DA PT FRANCO**

REM RONDA

GRACA DA PT FRANCO

	iABCZ	DECA	%
	17,57	1	5

PN-ED	PD-ED	PA-ED	PS-ED	PM120	IPP	STAY	PE365	AOL	ACAB
0,92	10,19	17,19	22,14	-1,33	-10,05	51,24	0,414	4,983	0,497
DECA	DECA	DECA	DECA	DECA	DECA	DECA	DECA	DECA	DECA
10	1	1	1	9	3	1	3	1	4

	IQGg	TOP
	21,5261	8

PD (KG)	PS	CFS	STAY	PES	IPP	AOL	EGS	MAR	CAR
12,12523	24,4973	6,07785	52.448171	1,04744	-7,9754	5,22077	0,42598	2,45786	0,01652
TOP %	TOP %	TOP %	TOP %	TOP %	TOP %	TOP %	TOP %	TOP %	TOP %
2	1	7	29	15	18	0,1	26	0,5	55



# 457 FIV DA PT FRANCO

RGD: MECF 457 - Sexo: MACHO - Nasc.: 12/04/2024

Peso: **767 KG** - CE: **42 cm**



REM TORIXOREU

C8288 DA MN

**REM ARMADOR**

x

**A1551 DA PT FRANCO**

REM RONDA

2072 DA PT FRANCO

	iABCZ	DECA	%
	31,53	1	0,1

PN-ED	PD-ED	PA-ED	PS-ED	PM120	IPP	STAY	PE365	AOL	ACAB
0,53	11,40	16,40	23,79	3,55	-22,92	69,97	1,245	4,478	4,719
DECA	DECA	DECA	DECA	DECA	DECA	DECA	DECA	DECA	DECA
9	1	1	1	1	1	1	1	1	1

	IQGg	TOP
	32,6424	1

PD (KG)	PS	CFS	STAY	PES	IPP	AOL	EGS	MAR	CAR
9,62963	18,7213	5,69090	72.928688	1,12499	-10,5713	3,92016	1,40385	0,19468	0,12137
TOP %	TOP %	TOP %	TOP %	TOP %	TOP %	TOP %	TOP %	TOP %	TOP %
7	5	9	1	12	10	1	2	43	99



# 447 FIV DA PT FRANCO

RGD: MECF 447 - Sexo: MACHO - Nasc.: 12/04/2024

Peso: **739 KG** - CE: **40 cm**



REM TORIXOREU

C8288 DA MN

**REM ARMADOR**

x

**7705 DA PT FRANCO(\*)**

REM RONDA

3447 DA PT FRANCO(\*)

	iABCZ	DECA	%
	22,22	1	2

PN-ED	PD-ED	PA-ED	PS-ED	PM120	IPP	STAY	PE365	AOL	ACAB
0,49	7,57	10,79	13,54	0,14	-23,56	64,16	1,150	2,048	3,308
DECA	DECA	DECA	DECA	DECA	DECA	DECA	DECA	DECA	DECA
9	1	2	2	6	1	1	1	2	1

	IQGg	TOP
	21,579	8

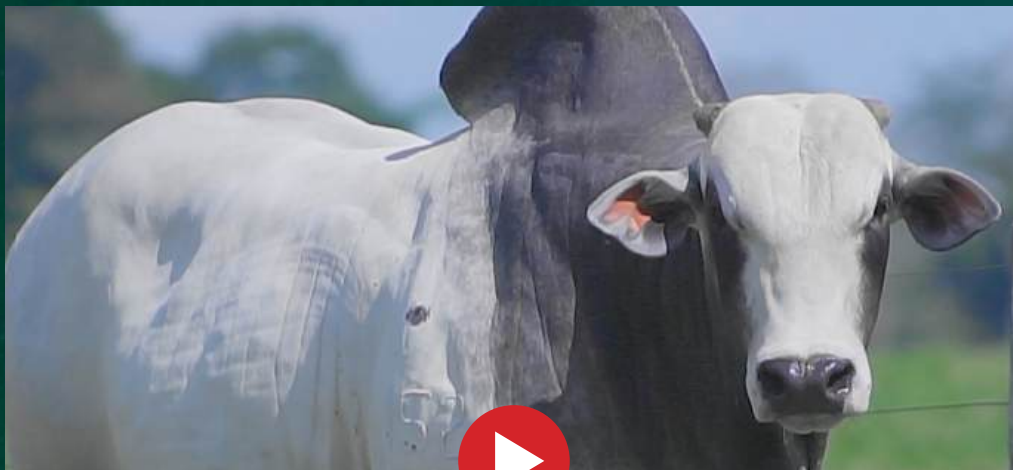
PD (KG)	PS	CFS	STAY	PES	IPP	AOL	EGS	MAR	CAR
7,90279	14,4519	5,27778	65.731665	1,43885	-9,9140	1,64615	1,33938	1,56812	0,04060
TOP %	TOP %	TOP %	TOP %	TOP %	TOP %	TOP %	TOP %	TOP %	TOP %
13	12	12	5	6	12	21	2	3	80



# 488 FIV DA PT FRANCO

RGD: MECF 488 - Sexo: MACHO - Nasc.: 18/04/2024

Peso: **725 KG** - CE: **40 cm**



REM TORIXOREU

C8288 DA MN

**REM ARMADOR**

x

**8598 DA PT FRANCO**

REM RONDA

2830 DA PT FRANCO(\*)

	iABCZ	DECA	%
	18,58	1	4

PN-ED	PD-ED	PA-ED	PS-ED	PM120	IPP	STAY	PE365	AOL	ACAB
0,13	3,58	7,78	10,76	-0,62	-21,99	63,75	0,912	2,692	1,227
DECA	DECA	DECA	DECA	DECA	DECA	DECA	DECA	DECA	DECA
5	4	3	2	7	1	1	1	1	2

	IQGg	TOP
	14,4234	22

PD (KG)	PS	CFS	STAY	PES	IPP	AOL	EGS	MAR	CAR
2,38159	6,6004	3,16622	66.0519	1,18851	-9,7100	2,23509	0,26427	0,00397	0,04031
TOP %	TOP %	TOP %	TOP %	TOP %	TOP %	TOP %	TOP %	TOP %	TOP %
55	42	31	4	11	13	12	35	52	80



# 691 FIV DA PT FRANCO

RGD: MECF 691 • Sexo: MACHO • Nasc.: 04/07/2024

Peso: **685 KG** • CE: **38 cm**



REM ARMADOR

BACKUP

**FORD FIV CAMPARINO**

x

**8335 DA PT FRANCO**

JHVM 11330 FIV CAMPARINO

1850 DA PT FRANCO

	iABCZ	DECA	%
	23,5	1	1

PN-ED	PD-ED	PA-ED	PS-ED	PM120	IPP	STAY	PE365	AOL	ACAB
0,83	10,16	11,80	16,59	-0,01	-29,04	69,64	0,222	2,490	0,081
DECA	DECA	DECA	DECA	DECA	DECA	DECA	DECA	DECA	DECA
10	1	1	1	6	1	1	5	1	5

	IQGg	TOP
	16,7879	16

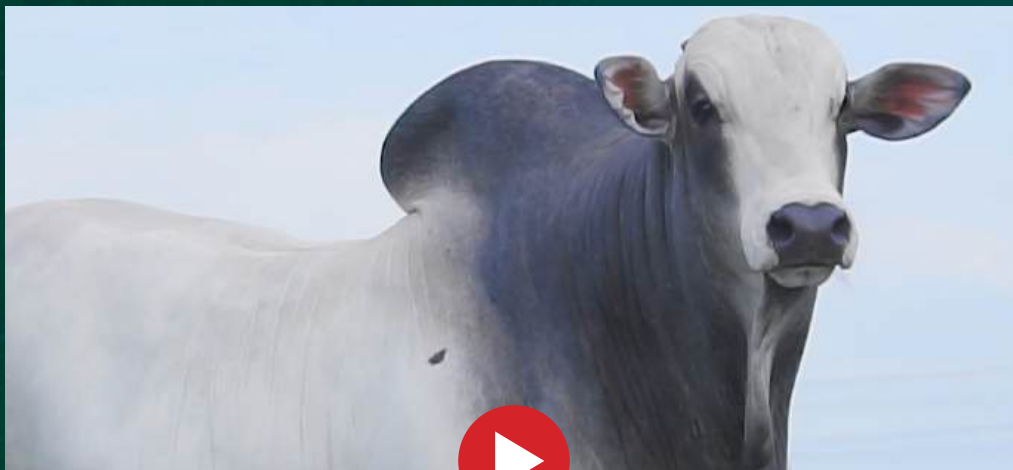
PD (KG)	PS	CFS	STAY	PES	IPP	AOL	EGS	MAR	CAR
11,13246	15,3851	4,86348	66.906167	0,36710	-14,8086	2,72460	-0,62851	-1,46121	0,01726
TOP %	TOP %	TOP %	TOP %	TOP %	TOP %	TOP %	TOP %	TOP %	TOP %
4	10	15	4	46	3	6	87	97	56



# 665 DA PT FRANCO

RGD: MECF 665 - Sexo: MACHO - Nasc.: 05/09/2024

Peso: **673 KG** - CE: **41 cm**



QUARUP BONS

**ESCORIAL MAT.**

BARAVAH MAT.

x

C2569 DA MN

**A1211 DA PT FRANCO**

2745 DA PT FRANCO

	iABCZ	DECA	%
	23,16	1	2

PN-ED	PD-ED	PA-ED	PS-ED	PM120	IPP	STAY	PE365	AOL	ACAB
0,60	9,87	16,82	18,85	1,21	-8,99	63,33	0,594	3,661	2,463
DECA	DECA	DECA	DECA	DECA	DECA	DECA	DECA	DECA	DECA
10	1	1	1	4	3	1	2	1	1

	IQGg	TOP
	25,7612	4

PD (KG)	PS	CFS	STAY	PES	IPP	AOL	EGS	MAR	CAR
10,23220	20,9811	6,15340	68.519319	0,26400	-4,4166	3,45314	1,15093	-0,97877	0,01075
TOP %	TOP %	TOP %	TOP %	TOP %	TOP %	TOP %	TOP %	TOP %	TOP %
5	3	7	3	52	34	2	4	90	48



# A5826 DA PT FRANCO

RGD: MEC A5826 - Sexo: MACHO - Nasc.: 18/07/2024

Peso: **641 KG** - CE: **39 cm**



QUARUP BONS

**ESCORIAL MAT.**

BARAVAH MAT.

x

GUETO DA PT FRANCO

**7700 DA PT FRANCO**

ADNETTE DA PT FRANCO

	iABCZ	DECA	%
	15,14	1	9

PN-ED	PD-ED	PA-ED	PS-ED	PM120	IPP	STAY	PE365	AOL	ACAB
0,01	7,04	9,00	7,31	0,32	-17,34	56,37	0,363	0,822	0,861
DECA	DECA	DECA	DECA	DECA	DECA	DECA	DECA	DECA	DECA
4	2	2	4	5	1	1	4	4	3

	IQGg	TOP
	9,7212	35

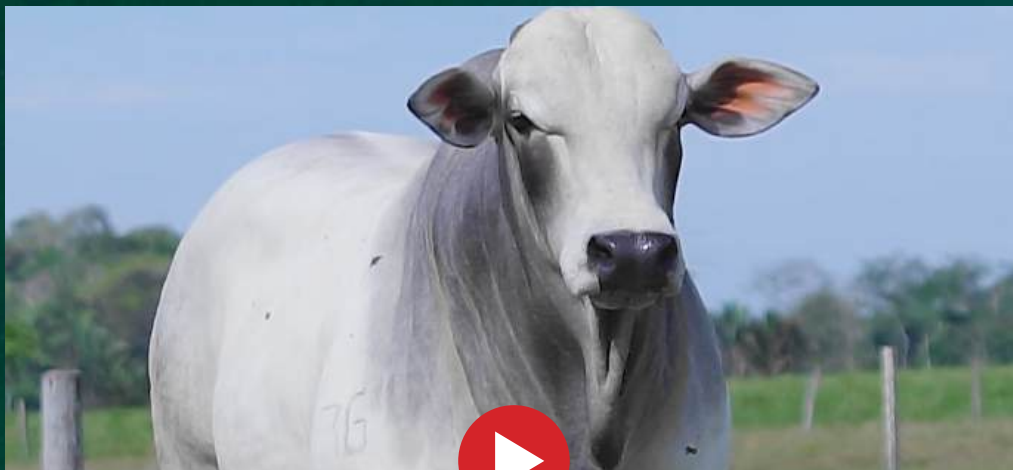
PD (KG)	PS	CFS	STAY	PES	IPP	AOL	EGS	MAR	CAR
6,41530	10,8280	4,28360	48.840943	-0,34885	0,0706	1,37621	0,76114	1,44534	0,10643
TOP %	TOP %	TOP %	TOP %	TOP %	TOP %	TOP %	TOP %	TOP %	TOP %
22	23	19	40	82	58	27	12	5	99



# A6115 DA PT FRANCO

RGD: MEC A6115 • Sexo: MACHO • Nasc.: 20/10/2024

Peso: **591 KG** • CE: **40 cm**



REM ARMADOR

MELOSO DA PT FRANCO(\*)

**FORD FIV CAMPARINO**

x

**6727 DA PT FRANCO**

JHVM 11330 FIV CAMPARINO

FILO DA PT FRANCO

	iABCZ	DECA	%
	5,95	4	-

PN-ED	PD-ED	PA-ED	PS-ED	PM120	IPP	STAY	PE365	AOL	ACAB
-0,01	1,82	0,86	3,20	-4,03	2,35	52,47	0,635	0,190	0,384
DECA	DECA	DECA	DECA	DECA	DECA	DECA	DECA	DECA	DECA
4	6	7	6	10	7	1	2	6	5

	IQGg	TOP
	2,5809	60

PD (KG)	PS	CFS	STAY	PES	IPP	AOL	EGS	MAR	CAR
1,60989	1,8331	2,04678	55.808743	0,87708	8,0285	-0,82848	0,47937	0,59958	-0,01250
TOP %	TOP %	TOP %	TOP %	TOP %	TOP %	TOP %	TOP %	TOP %	TOP %
62	66	45	20	21	91	83	23	25	24



# A6151 DA PT FRANCO

RGD: MEC A6151 - Sexo: MACHO - Nasc.: 10/11/2024

Peso: **571 KG** - CE: **42 cm**



REM ARMADOR

C8288 DA MN

**COMBOIO FIV DA S.NICE**

x

**A1043 DA PT FRANCO**

B4987 FIV DA S.NICE

ANTIGONA DA PT FRANCO

	iABCZ	DECA	%
	18,78	1	4

PN-ED	PD-ED	PA-ED	PS-ED	PM120	IPP	STAY	PE365	AOL	ACAB
-0,40	6,06	9,12	13,68	2,83	-41,45	52,68	1,047	0,929	-0,023
DECA	DECA	DECA	DECA	DECA	DECA	DECA	DECA	DECA	DECA
1	2	2	2	1	1	1	1	4	6

	IQGg	TOP
	23,6034	6

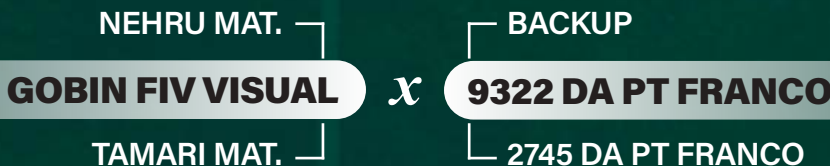
PD (KG)	PS	CFS	STAY	PES	IPP	AOL	EGS	MAR	CAR
3,66040	11,9083	6,61435	62.929014	2,01139	-24,6219	0,44853	0,11338	0,50287	-0,00050
TOP %	TOP %	TOP %	TOP %	TOP %	TOP %	TOP %	TOP %	TOP %	TOP %
43	19	5	7	1	0,1	52	45	29	36



# A5568 DA PT FRANCO

RGD: MEC A5568 • Sexo: MACHO • Nasc.: 11/06/2024

Peso: **675 KG** • CE: **41 cm**



iABCZ DECA %  
 15,71 1 8

PN-ED	PD-ED	PA-ED	PS-ED	PM120	IPP	STAY	PE365	AOL	ACAB
0,50	4,42	9,81	9,37	1,35	-23,08	55,49	0,250	1,478	0,608
DECA	DECA	DECA	DECA	DECA	DECA	DECA	DECA	DECA	DECA
9	3	2	3	3	1	1	5	3	4

IQGg TOP  
 16,828 16

PD (KG)	PS	CFS	STAY	PES	IPP	AOL	EGS	MAR	CAR
3,75789	10,2176	1,14797	60.851576	0,17361	-15,9953	0,64088	0,55317	2,42191	0,05881
TOP %	TOP %	TOP %	TOP %	TOP %	TOP %	TOP %	TOP %	TOP %	TOP %
43	26	57	10	57	3	46	20	0,5	92



# A5628 DA PT FRANCO(\*)

RGD: MEC A5628 - Sexo: MACHO - Nasc.: 18/06/2024

Peso: **785 KG** - CE: **44 cm**



QUARUP BONS

**ESCORIAL MAT.**

BARAVAH MAT.

x

VENCIUS RG(\*)

**9045 DA PT FRANCO(\*)**

4012 DA PT FRANCO(\*)

	iABCZ	DECA	%
	20,01	1	3

PN-ED	PD-ED	PA-ED	PS-ED	PM120	IPP	STAY	PE365	AOL	ACAB
0,27	10,81	18,11	23,59	5,82	-3,79	45,40	1,410	2,834	0,192
DECA	DECA	DECA	DECA	DECA	DECA	DECA	DECA	DECA	DECA
7	1	1	1	1	5	2	1	1	5

	IQGg	TOP
	20,6214	9

PD (KG)	PS	CFS	STAY	PES	IPP	AOL	EGS	MAR	CAR
9,99808	21,7599	8,13470	43,09994	1,28956	1,4025	1,77703	-0,72562	-1,05621	0,06044
TOP %	TOP %	TOP %	TOP %	TOP %	TOP %	TOP %	TOP %	TOP %	TOP %
6	2	2	60	8	65	19	90	91	93



# A5610 DA PT FRANCO(\*)

RGD: MEC A5610 - Sexo: MACHO - Nasc.: 17/06/2024

Peso: **775 KG** - CE: **42 cm**



QUARUP BONS

**ESCORIAL MAT.**

BARAVAH MAT.

x

VENCIUS RG(\*)

**6923 DA PT FRANCO(\*)**

3971 DA PT FRANCO(\*)

	iABCZ	DECA	%
	22,37	1	2

PN-ED	PD-ED	PA-ED	PS-ED	PM120	IPP	STAY	PE365	AOL	ACAB
0,80	17,19	27,77	31,09	5,06	-9,83	45,51	1,162	1,227	-1,658
DECA	DECA	DECA	DECA	DECA	DECA	DECA	DECA	DECA	DECA
10	1	1	1	1	3	2	1	3	10

	IQGg	TOP
	21,0332	9

PD (KG)	PS	CFS	STAY	PES	IPP	AOL	EGS	MAR	CAR
16,72974	32,6902	7,80119	46.961412	0,98621	7,1746	1,09012	-0,92355	-0,11498	0,02854
TOP %	TOP %	TOP %	TOP %	TOP %	TOP %	TOP %	TOP %	TOP %	TOP %
0,1	0,1	2	46	17	89	34	95	58	69



# 498 FIV DA PT FRANCO(\*)

RGD: MECF 498 - Sexo: MACHO - Nasc.: 24/04/2024

Peso: 773 KG - CE: 42 cm



REM GLADIADOR GENETICA ADITIVA

**REM JORDAO GENETICA ADITIVA**

REM REMP994HFIV

x

C8288 DA MN

**7705 DA PT FRANCO(\*)**

3447 DA PT FRANCO(\*)

	iABCZ	DECA	%
	16,66	1	6

PN-ED	PD-ED	PA-ED	PS-ED	PM120	IPP	STAY	PE365	AOL	ACAB
-0,41	5,40	9,70	12,58	-0,11	-21,07	56,09	1,084	1,082	1,265
DECA	DECA	DECA	DECA	DECA	DECA	DECA	DECA	DECA	DECA
1	3	2	2	6	1	1	1	4	2

	IQGg	TOP
	20,1803	10

PD (KG)	PS	CFS	STAY	PES	IPP	AOL	EGS	MAR	CAR
7,73400	15,8553	5,08322	62.691739	1,76897	-4,8925	0,19890	0,89198	-0,01584	0,00121
TOP %	TOP %	TOP %	TOP %	TOP %	TOP %	TOP %	TOP %	TOP %	TOP %
14	9	13	8	2	31	59	8	53	38



# A5660 DA PT FRANCO(\*)

RGD: MEC A5660 - Sexo: MACHO - Nasc.: 23/06/2024

Peso: **755 KG** - CE: **42 cm**



QUARUP BONS

**ESCORIAL MAT.**

BARAVAH MAT.

x

URICO DA MAGGI(\*)

**9849 DA PT FRANCO(\*)**

6781 DA PT FRANCO(\*)

	iABCZ	DECA	%
	12,54	2	14

PN-ED	PD-ED	PA-ED	PS-ED	PM120	IPP	STAY	PE365	AOL	ACAB
0,56	7,80	15,01	20,45	3,01	0,32	36,31	0,787	2,122	1,466
DECA	DECA	DECA	DECA	DECA	DECA	DECA	DECA	DECA	DECA
10	1	1	1	1	7	5	1	2	2



IQGg  
15,5136

TOP  
19

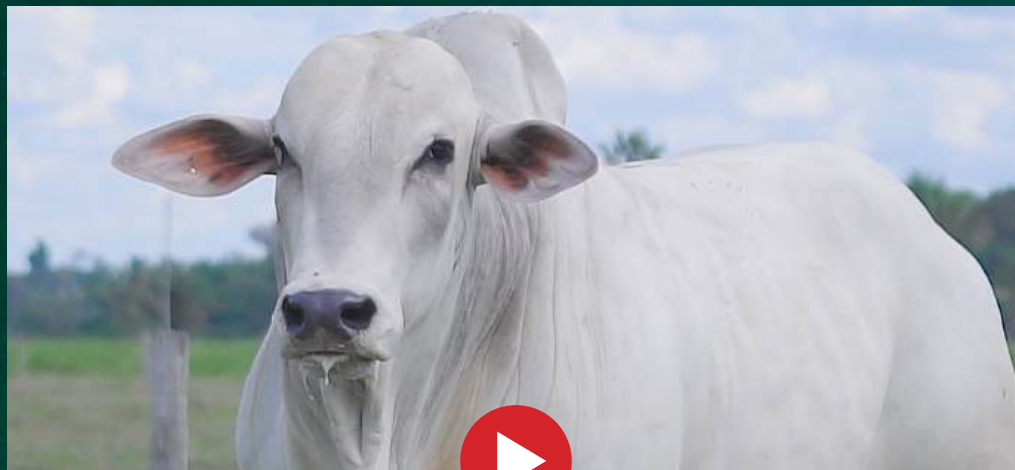
PD (KG)	PS	CFS	STAY	PES	IPP	AOL	EGS	MAR	CAR
7,28431	16,3144	5,13367	45,935919	0,53439	9,9707	1,40093	1,20193	-0,01714	-0,01637
TOP %	TOP %	TOP %	TOP %	TOP %	TOP %	TOP %	TOP %	TOP %	TOP %
16	8	13	50	37	95	27	3	53	20



# A5491 DA PT FRANCO(\*)

**RGD: MEC A5491 - Sexo: MACHO - Nasc.: 14/05/2024**

**Peso: 751 KG - CE: 41 cm**



NEHRU MAT.

BRINCO DA SM(\*)

**CLARIM MAT.**

x

**9526 DA PT FRANCO(\*)**

VIMARA MAT.

6451 DA PT FRANCO(\*)

	iABCZ	DECA	%
	13,76	2	11

PN-ED	PD-ED	PA-ED	PS-ED	PM120	IPP	STAY	PE365	AOL	ACAB
0,04	7,44	7,78	7,62	0,95	-12,74	57,26	-0,363	1,182	-1,303
DECA	DECA	DECA	DECA	DECA	DECA	DECA	DECA	DECA	DECA
5	1	3	4	4	2	1	9	3	9

	IQGg	TOP
	9,1869	37

PD (KG)	PS	CFS	STAY	PES	IPP	AOL	EGS	MAR	CAR
7,44895	9,5506	2,21306	59.747266	-0,56192	0,3365	1,19897	-0,87742	1,03086	-0,02177
TOP %	TOP %	TOP %	TOP %	TOP %	TOP %	TOP %	TOP %	TOP %	TOP %
16	28	43	12	89	60	31	94	12	16



# A5532 DA PT FRANCO(\*)

RGD: MEC A5532 - Sexo: MACHO - Nasc.: 29/05/2024

Peso: **737 KG** - CE: **39 cm**



QUARUP BONS

ZUM DE CV(\*)

**ESCORIAL MAT.**

x

**A2680 DA PT FRANCO(\*)**

BARAVAH MAT.

4354 DA PT FRANCO

	iABCZ	DECA	%
	13,56	2	12

PN-ED	PD-ED	PA-ED	PS-ED	PM120	IPP	STAY	PE365	AOL	ACAB
1,14	11,81	20,46	24,25	0,91	-6,68	34,86	0,203	4,016	0,689
DECA	DECA	DECA	DECA	DECA	DECA	DECA	DECA	DECA	DECA
10	1	1	1	4	4	6	5	1	4

	IQGg	TOP
	15,7956	18

PD (KG)	PS	CFS	STAY	PES	IPP	AOL	EGS	MAR	CAR
12,59393	24,1959	8,03085	42.138937	-0,52322	2,1886	4,21188	0,80304	0,37407	0,00512
TOP %	TOP %	TOP %	TOP %	TOP %	TOP %	TOP %	TOP %	TOP %	TOP %
2	1	2	63	88	69	0,5	10	34	42



# A5551 DA PT FRANCO(\*)

RGD: MEC A5551 • Sexo: MACHO • Nasc.: 09/06/2024

Peso: 733 KG • CE: 42 cm



QUARUP BONS

**ESCORIAL MAT.**

BARAVAH MAT.

x

VENCIUS RG(\*)

**8191 DA PT FRANCO(\*)**

ABRA DA PT FRANCO(\*)

	iABCZ	DECA	%
	18,59	1	4

PN-ED	PD-ED	PA-ED	PS-ED	PM120	IPP	STAY	PE365	AOL	ACAB
0,67	12,43	20,30	25,04	2,17	-3,23	46,43	0,694	3,901	0,124
DECA	DECA	DECA	DECA	DECA	DECA	DECA	DECA	DECA	DECA
10	1	1	1	2	5	2	2	1	5

	IQGg	TOP
	20,2959	10

PD (KG)	PS	CFS	STAY	PES	IPP	AOL	EGS	MAR	CAR
12,48583	25,7980	9,61606	49.16303	1,24551	4,2010	3,81259	0,02258	1,14977	0,08237
TOP %	TOP %	TOP %	TOP %	TOP %	TOP %	TOP %	TOP %	TOP %	TOP %
2	0,5	0,5	39	9	78	1	51	9	98



# A5805 DA PT FRANCO(\*)

RGD: MEC A5805 • Sexo: MACHO • Nasc.: 17/07/2024

Peso: **715 KG** • CE: **39 cm**



QUARUP BONS

URICO DA MAGGI(\*)

**ESCORIAL MAT.**

x

**A677 DA PT FRANCO(\*)**

BARAVAH MAT.

7657 DA PT FRANCO(\*)

	iABCZ	DECA	%
	13,51	2	12

PN-ED	PD-ED	PA-ED	PS-ED	PM120	IPP	STAY	PE365	AOL	ACAB
0,90	12,59	18,43	24,50	0,36	-2,13	38,83	0,015	3,839	-0,161
DECA	DECA	DECA	DECA	DECA	DECA	DECA	DECA	DECA	DECA
10	1	1	1	5	6	4	6	1	6



IQGg  
16,0506

TOP  
18

PD (KG)	PS	CFS	STAY	PES	IPP	AOL	EGS	MAR	CAR
12,84590	24,3174	6,78391	49.005952	-0,26031	8,9767	3,81609	-0,05063	-0,10492	0,00049
TOP %	TOP %	TOP %	TOP %	TOP %	TOP %	TOP %	TOP %	TOP %	TOP %
2	1	5	39	79	93	1	56	57	37



# 607 DA PT FRANCO(\*)

RGD: MECF 607 - Sexo: MACHO - Nasc.: 02/07/2024

Peso: **689 KG** - CE: **38 cm**



QUARUP BONS

**ESCORIAL MAT.**

BARAVAH MAT.

x

VENCIUS RG(\*)

**A3358 DA PT FRANCO(\*)**

AMARELADA DA PT FRANCO(\*)

	iABCZ	DECA	%
	15,93	1	8

PN-ED	PD-ED	PA-ED	PS-ED	PM120	IPP	STAY	PE365	AOL	ACAB
0,62	10,57	18,44	21,18	2,95	-7,93	39,11	1,004	2,759	1,119
DECA	DECA	DECA	DECA	DECA	DECA	DECA	DECA	DECA	DECA
10	1	1	1	1	4	4	1	1	3

	IQGg	TOP
	21,5453	8

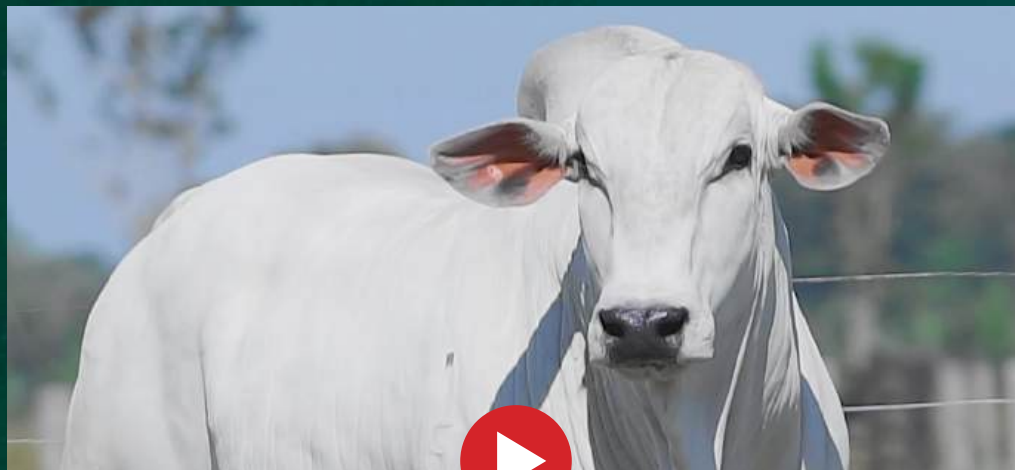
PD (KG)	PS	CFS	STAY	PES	IPP	AOL	EGS	MAR	CAR
9,73631	24,0878	7,50860	50.201326	0,71060	0,9496	2,17682	0,37131	-0,60531	0,06950
TOP %	TOP %	TOP %	TOP %	TOP %	TOP %	TOP %	TOP %	TOP %	TOP %
7	1	3	36	28	63	12	29	79	96



# A5863 DA PT FRANCO(\*)

RGD: MEC A5863 - Sexo: MACHO - Nasc.: 23/07/2024

Peso: **685 KG** - CE: **41 cm**



QUARUP BONS

**ESCORIAL MAT.**

BARAVAH MAT.

x

EPICO RG(\*)

**A1560 DA PT FRANCO(\*)**

4805 DA PT FRANCO(\*)

	iABCZ	DECA	%
	15,37	1	8

PN-ED	PD-ED	PA-ED	PS-ED	PM120	IPP	STAY	PE365	AOL	ACAB
0,77	11,29	20,75	26,09	4,07	5,05	36,93	0,781	3,387	-0,103
DECA	DECA	DECA	DECA	DECA	DECA	DECA	DECA	DECA	DECA
10	1	1	1	1	8	5	1	1	6

	IQGg	TOP
	19,2348	11

PD (KG)	PS	CFS	STAY	PES	IPP	AOL	EGS	MAR	CAR
10,51635	25,5530	6,40886	45.634927	0,27231	4,9206	3,93908	-0,87251	-0,21043	0,07226
TOP %	TOP %	TOP %	TOP %	TOP %	TOP %	TOP %	TOP %	TOP %	TOP %
5	0,5	6	51	52	81	1	94	62	97



# A6043 DA PT FRANCO(\*)

RGD: MEC A6043 • Sexo: MACHO • Nasc.: 01/10/2024

Peso: **679 KG** • CE: **40 cm**



QUARUP BONS

**ESCORIAL MAT.**

BARAVAH MAT.

x

APOGEU DE NAVIRAI(\*)

**4099 DA PT FRANCO(\*)**

PEPSIA DA PT FRANCO

	iABCZ	DECA	%
	12,21	2	15

PN-ED	PD-ED	PA-ED	PS-ED	PM120	IPP	STAY	PE365	AOL	ACAB
0,82	11,42	15,41	15,76	1,97	-5,59	38,57	0,750	-0,423	1,081
DECA	DECA	DECA	DECA	DECA	DECA	DECA	DECA	DECA	DECA
10	1	1	1	2	5	4	1	8	3

	IQGg	TOP
	9,1892	37

PD (KG)	PS	CFS	STAY	PES	IPP	AOL	EGS	MAR	CAR
10,19998	16,2883	4,15335	41.525927	0,29039	-3,1469	-0,59053	0,19865	1,29837	0,00999
TOP %	TOP %	TOP %	TOP %	TOP %	TOP %	TOP %	TOP %	TOP %	TOP %
5	8	21	65	51	40	78	40	7	48



# A5594 DA PT FRANCO(\*)

RGD: MEC A5594 - Sexo: MACHO - Nasc.: 14/06/2024

Peso: 665 KG - CE: 40 cm



QUARUP BONS

ESCORIAL MAT.

BARAVAH MAT.

x

VENCIUS RG(\*)

7770 DA PT FRANCO(\*)

3813 DA PT FRANCO(\*)

	iABCZ	DECA	%
	8,57	3	-

PN-ED	PD-ED	PA-ED	PS-ED	PM120	IPP	STAY	PE365	AOL	ACAB
-0,08	3,64	6,06	7,41	4,09	7,27	40,72	0,586	0,638	0,627
DECA	DECA	DECA	DECA	DECA	DECA	DECA	DECA	DECA	DECA
3	4	4	4	1	9	3	2	5	4



IQGg  
10,1211

TOP  
34

PD (KG)	PS	CFS	STAY	PES	IPP	AOL	EGS	MAR	CAR
3,42418	7,7420	5,68709	48.891682	-0,09790	4,2262	0,10088	-0,15849	1,31962	0,00698
TOP %	TOP %	TOP %	TOP %	TOP %	TOP %	TOP %	TOP %	TOP %	TOP %
45	37	9	40	71	79	61	63	6	44



# 536 DA PT FRANCO(\*)

RGD: MECF 536 - Sexo: MACHO - Nasc.: 13/06/2024

Peso: **653 KG** - CE: **38 cm**



QUARUP BONS

**ESCORIAL MAT.**

BARAVAH MAT.

x

VENCIUS RG(\*)

**A1214 DA PT FRANCO(\*)**

ABRA DA PT FRANCO(\*)

	iABCZ	DECA	%
	15,86	1	8

PN-ED	PD-ED	PA-ED	PS-ED	PM120	IPP	STAY	PE365	AOL	ACAB
-0,04	8,66	11,74	11,80	3,32	-9,57	49,81	0,166	1,119	1,814
DECA	DECA	DECA	DECA	DECA	DECA	DECA	DECA	DECA	DECA
4	1	1	2	1	3	1	5	4	1

	IQGg	TOP
	13,6379	24

PD (KG)	PS	CFS	STAY	PES	IPP	AOL	EGS	MAR	CAR
6,86786	10,1007	6,19572	56,421002	-0,01681	7,2279	0,58929	0,23488	0,07832	0,13630
TOP %	TOP %	TOP %	TOP %	TOP %	TOP %	TOP %	TOP %	TOP %	TOP %
19	26	7	18	67	89	48	37	48	99



# A5598 DA PT FRANCO(\*)

RGD: MEC A5598 - Sexo: MACHO - Nasc.: 14/06/2024

**Peso: 785 KG - CE: 43 cm**



QUARUP BONS

VENCIUS RG(\*)


**ESCORIAL MAT.**

x


**8067 DA PT FRANCO(\*)**

BARAVAH MAT.

3401 DA PT FRANCO

 iABCZ **DECA** %  
10,75 **2** 19

PN-ED	PD-ED	PA-ED	PS-ED	PM120	IPP	STAY	PE365	AOL	ACAB
-0,01	4,57	8,84	9,24	4,52	1,55	39,78	1,129	0,948	0,769
DECA	DECA	DECA	DECA	DECA	DECA	DECA	DECA	DECA	DECA
4	3	2	3	1	7	4	1	4	3

 **IQGg** **TOP**  
14,2654 22

PD (KG)	PS	CFS	STAY	PES	IPP	AOL	EGS	MAR	CAR
4,91528	11,7774	4,08224	43.268765	0,80656	4,8699	0,83730	0,37039	1,26581	0,04105
TOP %	TOP %	TOP %	TOP %	TOP %	TOP %	TOP %	TOP %	TOP %	TOP %
33	20	21	59	24	81	41	29	7	80



# A5580 DA PT FRANCO(\*)

RGD: MEC A5580 - Sexo: MACHO - Nasc.: 12/06/2024

Peso: **775 KG** - CE: **40 cm**



QUARUP BONS

**ESCORIAL MAT.**

BARAVAH MAT.

x

VENCIUS RG(\*)

**8779 DA PT FRANCO(\*)**

4533 DA PT FRANCO

	iABCZ	DECA	%
	17,21	1	6

PN-ED	PD-ED	PA-ED	PS-ED	PM120	IPP	STAY	PE365	AOL	ACAB
0,46	10,16	16,03	17,91	3,70	-25,61	47,74	-0,176	0,690	-0,161
DECA	DECA	DECA	DECA	DECA	DECA	DECA	DECA	DECA	DECA
9	1	1	1	1	1	1	8	5	6

	IQGg	TOP
	21,1951	8

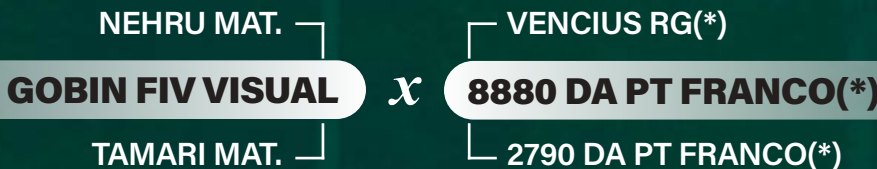
PD (KG)	PS	CFS	STAY	PES	IPP	AOL	EGS	MAR	CAR
8,75580	17,3893	5,09953	64.349146	-0,21541	-13,6952	1,02810	-0,13597	0,62172	0,03765
TOP %	TOP %	TOP %	TOP %	TOP %	TOP %	TOP %	TOP %	TOP %	TOP %
10	6	13	6	77	5	36	62	24	77




# A5576 DA PT FRANCO(\*)


RGD: MEC A5576 - Sexo: MACHO - Nasc.: 12/06/2024

Peso: **757 KG** - CE: **43 cm**



 iABCZ DECA %  
 16,89 1 6

PN-ED	PD-ED	PA-ED	PS-ED	PM120	IPP	STAY	PE365	AOL	ACAB
0,64	13,13	20,32	24,48	1,02	-17,34	41,04	0,752	1,336	1,372
DECA	DECA	DECA	DECA	DECA	DECA	DECA	DECA	DECA	DECA
10	1	1	1	4	1	3	1	3	2

 IQGg TOP  
 15,3393 19

PD (KG)	PS	CFS	STAY	PES	IPP	AOL	EGS	MAR	CAR
12,42552	21,2708	6,16802	52.303564	0,35513	-10,4405	0,22813	-0,00414	-0,08249	0,01665
TOP %	TOP %	TOP %	TOP %	TOP %	TOP %	TOP %	TOP %	TOP %	TOP %
2	2	7	29	47	11	58	53	56	55



# A5612 DA PT FRANCO(\*)

RGD: MEC A5612 - Sexo: MACHO - Nasc.: 17/06/2024

Peso: **725 KG** - CE: **41 cm**



QUARUP BONS

**ESCORIAL MAT.**


BARAVAH MAT.

x


MELOSO DA PT FRANCO(\*)

**6753 DA PT FRANCO(\*)**

MORGADA PT FRANCO(\*)

 iABCZ **15,55** DECA **1** % **8**

PN-ED	PD-ED	PA-ED	PS-ED	PM120	IPP	STAY	PE365	AOL	ACAB
0,82	8,07	12,10	17,11	0,57	-12,24	50,82	0,637	2,506	-0,425
DECA	DECA	DECA	DECA	DECA	DECA	DECA	DECA	DECA	DECA
10	1	1	1	5	3	1	2	1	7

 IQGg **14,5699** TOP **21**

PD (KG)	PS	CFS	STAY	PES	IPP	AOL	EGS	MAR	CAR
8,49928	17,4788	4,30246	56,412431	-0,00616	-6,1920	1,63511	0,38592	1,19569	0,13998
TOP %	TOP %	TOP %	TOP %	TOP %	TOP %	TOP %	TOP %	TOP %	TOP %
11	6	19	18	67	25	22	28	8	99



# A5593 DA PT FRANCO(\*)

RGD: MEC A5593 - Sexo: MACHO - Nasc.: 14/06/2024

Peso: 713 KG - CE: 42 cm



QUARUP BONS

**ESCORIAL MAT.**

BARAVAH MAT.

x

C2569 DA MN

**9820 DA PT FRANCO(\*)**

6927 DA PT FRANCO(\*)

	iABCZ	DECA	%
	22,21	1	2

PN-ED	PD-ED	PA-ED	PS-ED	PM120	IPP	STAY	PE365	AOL	ACAB
0,09	8,99	13,52	14,67	4,44	6,90	62,49	0,733	3,682	2,189
DECA	DECA	DECA	DECA	DECA	DECA	DECA	DECA	DECA	DECA
5	1	1	1	1	9	1	2	1	1

	IQGg	TOP
	22,6891	7

PD (KG)	PS	CFS	STAY	PES	IPP	AOL	EGS	MAR	CAR
5,77777	15,3270	5,39339	55.965267	-0,09125	-0,7378	3,59921	0,98767	1,70348	0,00605
TOP %	TOP %	TOP %	TOP %	TOP %	TOP %	TOP %	TOP %	TOP %	TOP %
26	10	11	19	71	54	2	6	3	43



# A5860 DA PT FRANCO(\*)

RGD: MEC A5860 - Sexo: MACHO - Nasc.: 23/07/2024

Peso: 705 KG - CE: 42 cm



QUARUP BONS

**ESCORIAL MAT.**

BARAVAH MAT.

x

URICO DA MAGGI(\*)

**A887 DA PT FRANCO(\*)**

1945 DA PT FRANCO

	iABCZ	DECA	%
	14,74	1	10

PN-ED	PD-ED	PA-ED	PS-ED	PM120	IPP	STAY	PE365	AOL	ACAB
0,28	7,54	15,17	21,38	0,22	0,50	42,83	0,589	4,001	3,612
DECA	DECA	DECA	DECA	DECA	DECA	DECA	DECA	DECA	DECA
7	1	1	1	6	7	3	2	1	1

	IQGg	TOP
	22,1782	7

PD (KG)	PS	CFS	STAY	PES	IPP	AOL	EGS	MAR	CAR
8,28913	21,3693	6,58366	52.628066	0,76787	-5,3226	3,51435	1,40251	0,09154	0,15138
TOP %	TOP %	TOP %	TOP %	TOP %	TOP %	TOP %	TOP %	TOP %	TOP %
12	2	5	28	26	29	2	2	48	99



5° LEILÃO GENÉTICA  
AGROPECUÁRIA  
**PORTO FRANCO**

LOTE  
**98**

*Padrão e Mocho*

# A5872 DA PT FRANCO(\*)

RGD: MEC A5872 - Sexo: MACHO - Nasc.: 25/07/2024

Peso: **675 KG** - CE: **41 cm**



CARAJA DA MN

VERNON MAT.

**E3950 DA MN**

x

**A429 DA PT FRANCO(\*)**

D7554 DA MN

AMANTE II DA PT FRANCO(\*)

	iABCZ	DECA	%
	20,24	1	3

PN-ED	PD-ED	PA-ED	PS-ED	PM120	IPP	STAY	PE365	AOL	ACAB
0,59	10,24	12,08	14,51	-1,17	-17,59	64,05	0,208	2,400	1,767
DECA	DECA	DECA	DECA	DECA	DECA	DECA	DECA	DECA	DECA
10	1	1	1	8	1	1	5	1	1

	IQGg	TOP
	15,3774	19

PD (KG)	PS	CFS	STAY	PES	IPP	AOL	EGS	MAR	CAR
9,06094	13,4540	9,27237	60.349157	0,08701	-2,5526	2,28031	0,89454	-0,22588	0,01946
TOP %	TOP %	TOP %	TOP %	TOP %	TOP %	TOP %	TOP %	TOP %	TOP %
9	15	1	11	62	44	11	8	63	59



# A5973 DA PT FRANCO(\*)

RGD: MEC A5973 - Sexo: MACHO - Nasc.: 24/09/2024

Peso: **645 KG** - CE: **38 cm**



TAJ FIV DE NAVIRAI

**398 FIV DE NAVIRAI**

281 FIV DE NAVIRAI

x

URICO DA MAGGI(\*)

**9096 DA PT FRANCO(\*)**

1990 DA PT FRANCO(\*)

	iABCZ	DECA	%
	17,65	1	5

PN-ED	PD-ED	PA-ED	PS-ED	PM120	IPP	STAY	PE365	AOL	ACAB
0,16	8,19	12,79	15,41	4,06	-11,44	43,33	1,336	4,818	1,460
DECA	DECA	DECA	DECA	DECA	DECA	DECA	DECA	DECA	DECA
6	1	1	1	1	3	2	1	1	2

	IQGg	TOP
	24,5704	5

PD (KG)	PS	CFS	STAY	PES	IPP	AOL	EGS	MAR	CAR
6,90644	12,7860	6,11230	46.051517	1,15819	-3,7931	5,34255	0,80496	-0,45478	-0,03005
TOP %	TOP %	TOP %	TOP %	TOP %	TOP %	TOP %	TOP %	TOP %	TOP %
19	17	7	49	12	37	0,1	10	73	11



# A5672 DA PT FRANCO(\*)

RGD: MEC A5672 - Sexo: MACHO - Nasc.: 24/06/2024

Peso: **755 KG** - CE: **41 cm**



QUARUP BONS

**ESCORIAL MAT.**

BARAVAH MAT.

x

VENCIUS RG(\*)

**7568 DA PT FRANCO(\*)**

3981 DA PT FRANCO

	iABCZ	DECA	%
	16,6	1	7

PN-ED	PD-ED	PA-ED	PS-ED	PM120	IPP	STAY	PE365	AOL	ACAB
0,55	5,98	14,15	19,65	2,50	-9,57	47,46	0,616	2,345	2,425
DECA	DECA	DECA	DECA	DECA	DECA	DECA	DECA	DECA	DECA
9	2	1	1	2	3	2	2	1	1

	IQGg	TOP
	17,8032	14

PD (KG)	PS	CFS	STAY	PES	IPP	AOL	EGS	MAR	CAR
6,26596	16,2269	3,99460	52.298086	0,02624	-10,2896	2,04866	0,58219	1,25869	-0,03164
TOP %	TOP %	TOP %	TOP %	TOP %	TOP %	TOP %	TOP %	TOP %	TOP %
23	8	22	29	65	11	14	18	7	10



# 454 FIV DA PT FRANCO(\*)

RGD: MECF 454 - Sexo: MACHO - Nasc.: 12/04/2024

Peso: 747 KG - CE: 44 cm



REM TORIXOREU

VENCIUS RG(\*)

**REM ARMADOR**

x

**8651 DA PT FRANCO(\*)**

REM RONDA

5268 DA PT FRANCO(\*)

	iABCZ	DECA	%
	16,39	1	7

PN-ED	PD-ED	PA-ED	PS-ED	PM120	IPP	STAY	PE365	AOL	ACAB
-0,22	3,69	9,95	11,61	3,07	-30,11	51,00	1,290	0,494	-0,232
DECA	DECA	DECA	DECA	DECA	DECA	DECA	DECA	DECA	DECA
2	4	2	2	1	1	1	1	5	6

	IQGg	TOP
	22,2353	7

PD (KG)	PS	CFS	STAY	PES	IPP	AOL	EGS	MAR	CAR
3,51651	12,2813	4,87167	62.435514	0,97171	-23,5666	0,40738	0,01702	0,11263	0,02352
TOP %	TOP %	TOP %	TOP %	TOP %	TOP %	TOP %	TOP %	TOP %	TOP %
45	18	15	8	17	0,1	53	52	47	63



# 487 FIV DA PT FRANCO

RGD: MECF 487 - Sexo: MACHO - Nasc.: 18/04/2024

Peso: 739 KG - CE: 42 cm



REM TORIXOREU

PACOTE RG(\*)

**REM ARMADOR**

x

**3077 DA PT FRANCO**

REM RONDA

ABELHUDA

	iABCZ	DECA	%
	16,85	1	6

PN-ED	PD-ED	PA-ED	PS-ED	PM120	IPP	STAY	PE365	AOL	ACAB
0,22	5,74	8,23	9,55	-0,86	-18,86	59,94	0,413	2,672	1,507
DECA	DECA	DECA	DECA	DECA	DECA	DECA	DECA	DECA	DECA
7	2	3	3	8	1	1	3	1	2

	IQGg	TOP
	18,2639	13

PD (KG)	PS	CFS	STAY	PES	IPP	AOL	EGS	MAR	CAR
5,27985	10,7165	2,66163	69.764384	0,52002	-11,2167	1,82807	0,14367	0,11544	0,13030
TOP %	TOP %	TOP %	TOP %	TOP %	TOP %	TOP %	TOP %	TOP %	TOP %
30	24	37	2	38	9	18	43	46	99



# A6095 DA PT FRANCO

RGD: MEC A6095 - Sexo: MACHO - Nasc.: 09/10/2024

Peso: **633 KG** - CE: **44 cm**



TOGO DA MN

CONSULTOR MAT.

**PACU DA MN**

x

**A3097 DA PT FRANCO(\*)**

D8551 DA MN

9397 DA PT FRANCO(\*)

	iABCZ	DECA	%
	22,65	1	2

PN-ED	PD-ED	PA-ED	PS-ED	PM120	IPP	STAY	PE365	AOL	ACAB
0,61	11,51	14,30	17,31	3,59	-14,85	56,74	0,985	3,363	1,360
DECA	DECA	DECA	DECA	DECA	DECA	DECA	DECA	DECA	DECA
10	1	1	1	1	2	1	1	1	2

	IQGg	TOP
	25,9318	4

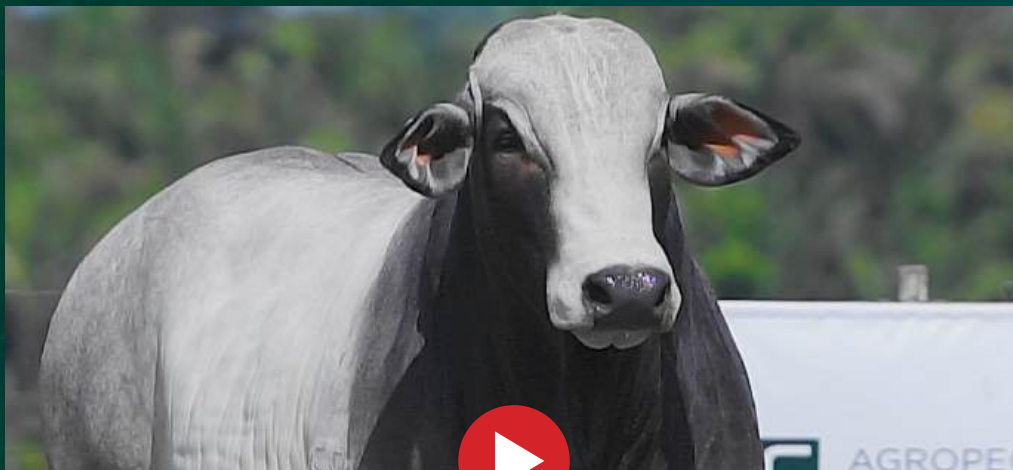
PD (KG)	PS	CFS	STAY	PES	IPP	AOL	EGS	MAR	CAR
10,62987	17,4661	5,71647	60.922068	1,49157	-4,2640	2,94183	0,95825	1,79800	0,11179
TOP %	TOP %	TOP %	TOP %	TOP %	TOP %	TOP %	TOP %	TOP %	TOP %
5	6	9	10	5	35	5	6	2	99



# 722 DA PT FRANCO(\*)

RGD: MECF 722 • Sexo: MACHO • Nasc.: 01/10/2024

Peso: **625 KG** • CE: **38 cm**



REM CALDONEGRO

CHELUR MAT.

**CONCEITO FIV DA S.NICE**

x

**A3007 DA PT FRANCO(\*)**

B5973 FIV DA S.NICE

9607 DA PT FRANCO(\*)

	iABCZ	DECA	%
	18,35	1	5

PN-ED	PD-ED	PA-ED	PS-ED	PM120	IPP	STAY	PE365	AOL	ACAB
0,18	7,98	13,98	18,70	1,82	-16,06	53,16	0,235	2,226	1,753
DECA	DECA	DECA	DECA	DECA	DECA	DECA	DECA	DECA	DECA
6	1	1	1	2	2	1	5	2	1

	IQGg	TOP
	21,8725	8

PD (KG)	PS	CFS	STAY	PES	IPP	AOL	EGS	MAR	CAR
8,40236	15,1550	5,01812	65.400023	0,44375	-0,1357	2,20084	0,63411	0,74577	0,03134
TOP %	TOP %	TOP %	TOP %	TOP %	TOP %	TOP %	TOP %	TOP %	TOP %
11	10	13	5	42	57	12	16	20	71



**5° LEILÃO GENÉTICA**  
**AGROPECUÁRIA**  
**PORTO FRANCO**



**2026**